

# ANT2 antibody

Catalog Number: 108106

## Product name

ANT2 antibody

WB: 1:200-1:1000

IHC: 1:20-1:200

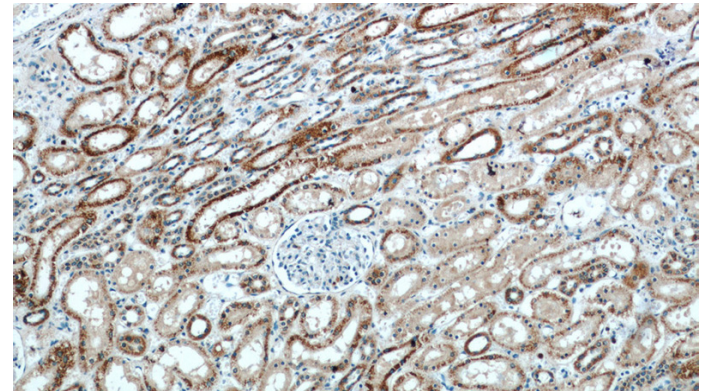
## Immunogen

[Human SLC25A5 Recombinant protein \(His tag\)](#)

## Validations

## Specificity

Human, Mouse, Rat; other species not tested.



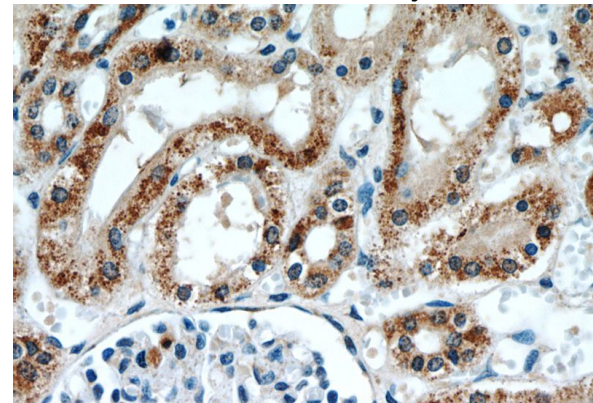
## Antibody description

ANT2 Rabbit Polyclonal antibody. Positive IHC detected in human kidney tissue. Positive WB detected in mouse brain tissue. Observed molecular weight by Western-blot: 30-32 kDa

Immunohistochemistry of paraffin-embedded human kidney slide using Catalog No:108106(SLC25A5 Antibody) at dilution of 1:50

## Preparation

This antibody was obtained by immunization of ANT2 recombinant protein (Accession Number: NM\_001152). Purification method: Antigen affinity purified.



## Formulation

PBS with 0.02% sodium azide and 50% glycerol pH 7.3.

Immunohistochemistry of paraffin-embedded human kidney slide using Catalog No:108106(SLC25A5 Antibody) at dilution of 1:50

## Storage

Store at -20°C. DO NOT ALIQUOT

## Clonality

Polyclonal

## Ig Type

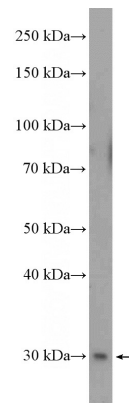
Rabbit IgG

## Applications

ELISA, IHC, WB

## Dilutions

Recommended Dilution:



mouse brain tissue were subjected to SDS PAGE followed by western blot with Catalog

# ANT2 antibody



Catalog Number: 108106

---

No:108106(SLC25A5 Antibody) at dilution of 1:300