

ANP32B antibody

Catalog Number: 108105

Product name

ANP32B antibody

Immunogen

[Human ANP32B Recombinant protein \(GST tag\)](#)

Specificity

Human, Mouse; other species not tested.

Antibody description

ANP32B Rabbit Polyclonal antibody. Positive WB detected in HEK-293 cells, A431 cells, HeLa cells, RAW 264.7 cells. Positive IP detected in HeLa cells. Positive IHC detected in human pancreas cancer tissue, human colon cancer tissue. Positive IF detected in HeLa cells. Observed molecular weight by Western-blot: 29 kDa

Preparation

This antibody was obtained by immunization of ANP32B recombinant protein (Accession Number: NM_006401). Purification method: Antigen affinity purified.

Formulation

PBS with 0.1% sodium azide and 50% glycerol pH 7.3.

Storage

Store at -20°C. DO NOT ALIQUOT

Clonality

Polyclonal

Ig Type

Rabbit IgG

Applications

ELISA, WB, IHC, IP, IF

Dilutions

Recommended Dilution:

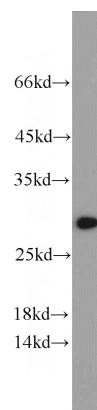
WB: 1:500-1:5000

IP: 1:500-1:5000

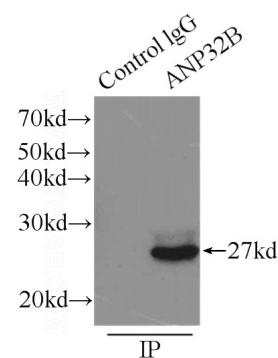
IHC: 1:20-1:200

IF: 1:20-1:200

Validations



HEK-293 cells were subjected to SDS PAGE followed by western blot with Catalog No:108105(ANP32B antibody) at dilution of

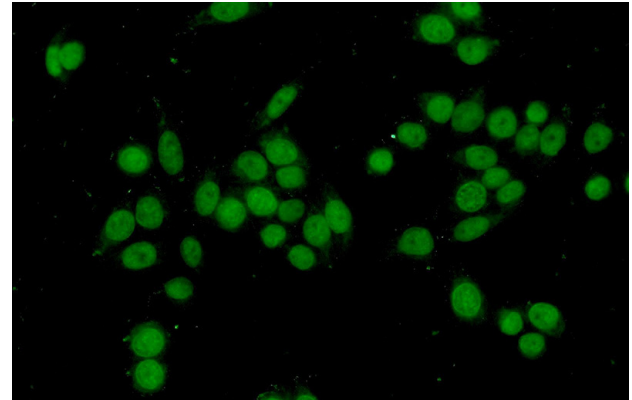
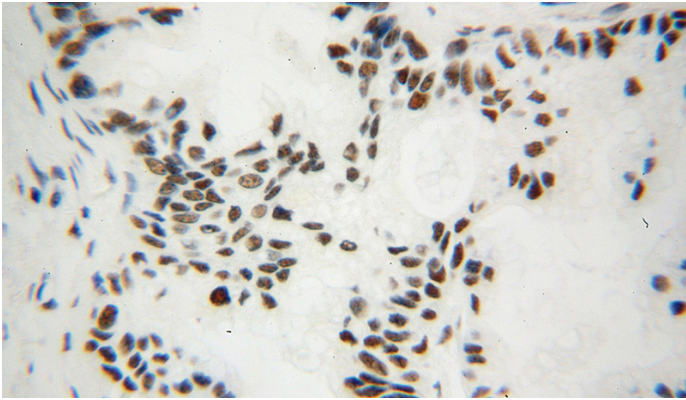


1:1000

IP Result of anti-ANP32B (IP:Catalog No:108105, 3ug; Detection:Catalog No:108105 1:1000) with HeLa cells lysate 3000ug.

ANP32B antibody

Catalog Number: 108105



Immunohistochemical of paraffin-embedded human pancreas cancer using Catalog No:108105(ANP32B antibody) at dilution of 1:100 (under 40x lens)

Immunofluorescent analysis of HeLa cells using Catalog No:108105(ANP32B Antibody) at dilution of 1:50 and Alexa Fluor 488-conjugated AffiniPure Goat Anti-Rabbit IgG(H+L)