

ANO2 antibody

Catalog Number: 108101

Product name

ANO2 antibody

IP: 1:200-1:1000

IHC: 1:20-1:200

Specificity

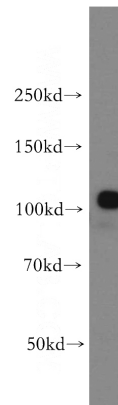
Human, Mouse, Rat; other species not tested.

IF: 1:10-1:100

Antibody description

ANO2 Rabbit Polyclonal antibody. Positive WB detected in mouse brain tissue, HeLa cells, human brain tissue, mouse eye tissue. Positive IP detected in mouse brain tissue. Positive IF detected in HepG2 cells, HeLa cells. Positive IHC detected in human breast cancer tissue. Observed molecular weight by Western-blot: 114kd

Validations



Preparation

This antibody was obtained by immunization of Peptide (Accession Number: NM_020373). Purification method: Antigen affinity purified.

mouse brain tissue were subjected to SDS PAGE followed by western blot with Catalog No:108101(ANO2 antibody) at dilution of 1:500

Formulation

PBS with 0.02% sodium azide and 50% glycerol pH 7.3.

Storage

Store at -20°C. DO NOT ALIQUOT

Clonality

Polyclonal

Ig Type

Rabbit IgG

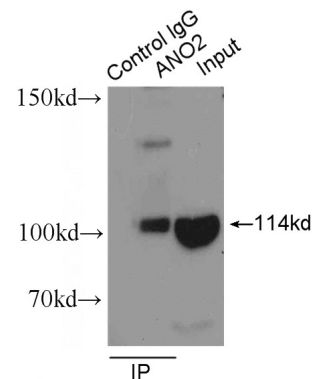
Applications

ELISA, WB, IF, IP, IHC

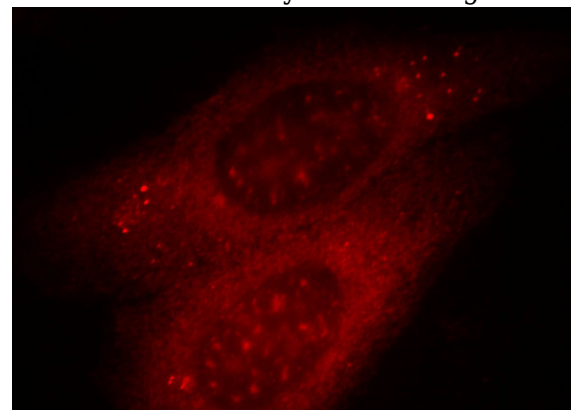
Dilutions

Recommended Dilution:

WB: 1:1000-1:10000



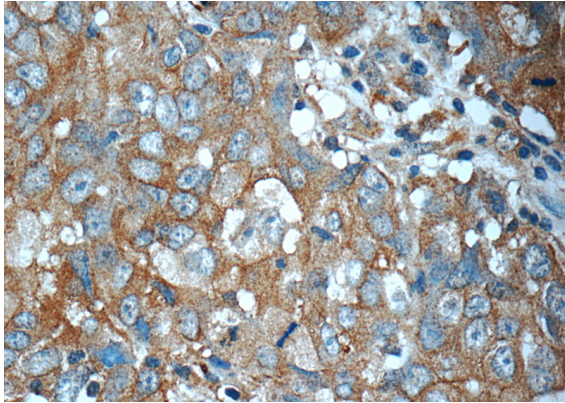
IP Result of anti-ANO2 (IP:Catalog No:108101, 4ug; Detection:Catalog No:108101 1:300) with mouse brain tissue lysate 10000ug.



ANO2 antibody

Catalog Number: 108101

Immunofluorescent analysis of HepG2 cells, using ANO2 antibody Catalog No:108101 at 1:25 dilution and Rhodamine-labeled goat anti-rabbit IgG (red).



Immunohistochemistry of paraffin-embedded human breast cancer tissue slide using Catalog No:108101(ANO2 Antibody) at dilution of 1:50 (under 40x lens)