

Annexin A1 antibody



Catalog Number: 108088

Product name

Annexin A1 antibody

Specificity

Human, Mouse, Rat; other species not tested.

Antibody description

Annexin A1 Rabbit Polyclonal antibody. Positive IHC detected in human oesophagus tissue, human kidney tissue, human lung tissue, human ovary tumor tissue, human small intestine tissue. Positive IF detected in A431 cells. Positive IP detected in HeLa cells. Positive WB detected in PC-3 cells, A431 cells, C6 cells, HeLa cells, HepG2 cells, K-562 cells, MCF7 cells, MDA-MB-453s cells, U-937 cells. Observed molecular weight by Western-blot: 37 kDa

Preparation

This antibody was obtained by immunization of Annexin A1 recombinant protein (Accession Number: XM_011518609). Purification method: Antigen affinity purified.

Formulation

PBS with 0.02% sodium azide and 50% glycerol pH 7.3.

Storage

Store at -20°C. DO NOT ALIQUOT

Clonality

Polyclonal

Ig Type

Rabbit IgG

Applications

ELISA, WB, IP, IHC, IF

Dilutions

Recommended Dilution:

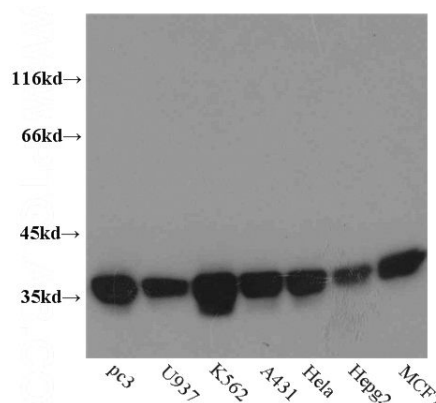
WB: 1:1000-1:10000

IP: 1:1000-1:10000

IHC: 1:20-1:200

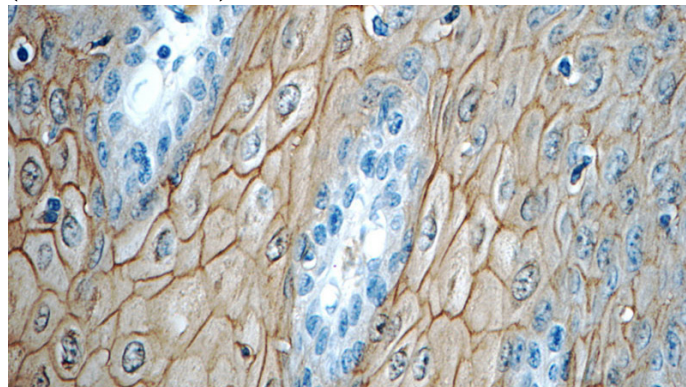
IF: 1:20-1:200

Validations



WB result of Catalog No:108088(ANXA1 antibody).

Immunohistochemistry of paraffin-embedded human oesophagus tissue slide using Catalog No:108088(ANXA1 Antibody) at dilution of 1:50 (under 10x lens)

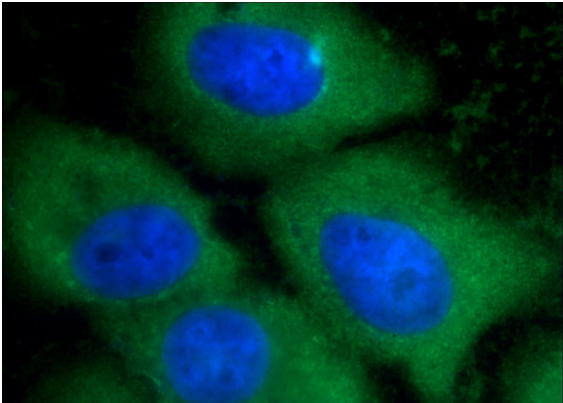


Immunohistochemistry of paraffin-embedded human oesophagus tissue slide using Catalog No:108088(ANXA1 Antibody) at dilution of 1:50 (under 40x lens)

Annexin A1 antibody

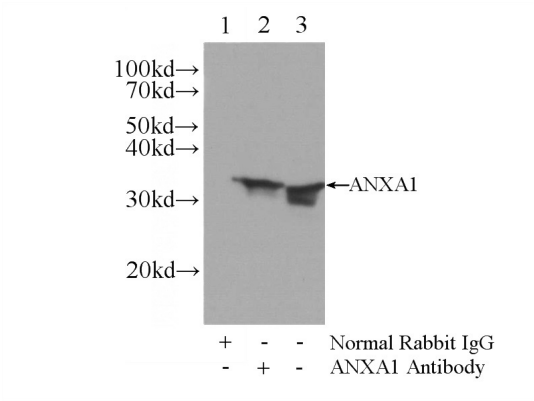


Catalog Number: 108088

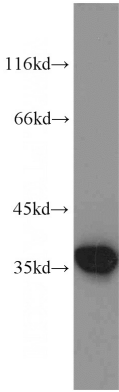


Immunofluorescent analysis of A431 cells using Catalog No:108088(ANXA1 Antibody) at dilution of 1:100 and Alexa Fluor 488-conjugated

PC-3 cells were subjected to SDS PAGE followed by western blot with Catalog No:108088(ANXA1 antibody) at dilution of 1:2000



IP Result of anti-ANXA1 (IP:Catalog No:108088, 3ug; Detection:Catalog No:108088 1:2000) with HeLa cells lysate 2400ug.



AffiniPure Goat Anti-Rabbit IgG(H+L)