

# ANKLE1 antibody



Catalog Number: 108061

## Product name

ANKLE1 antibody

## Specificity

Human; other species not tested.

## Antibody description

ANKLE1 Rabbit Polyclonal antibody. Positive IHC detected in human breast cancer tissue. Positive WB detected in Hela cells, K-562 cells. Observed molecular weight by Western-blot: 67 kDa

## Preparation

This antibody was obtained by immunization of ANKLE1 recombinant protein (Accession Number: NM\_001278443). Purification method: Antigen Affinity purified.

## Formulation

PBS with 0.02% sodium azide and 50% glycerol pH 7.3.

## Storage

Store at -20°C. DO NOT ALIQUOT

## Clonality

Polyclonal

## Ig Type

Rabbit IgG

## Applications

ELISA, WB, IHC

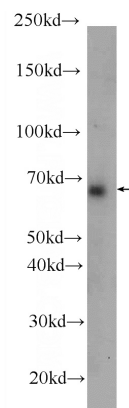
## Dilutions

Recommended Dilution:

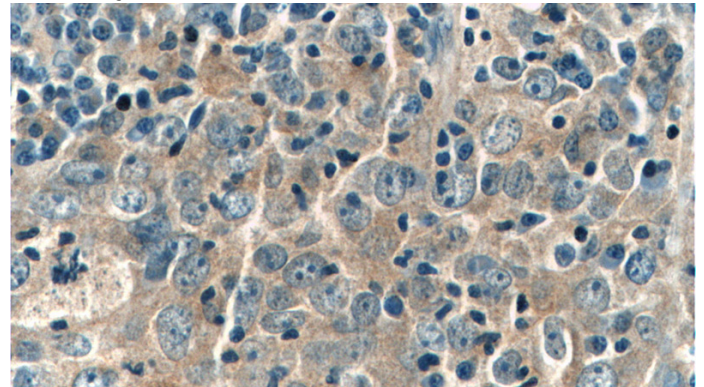
WB: 1:200-1:2000

IHC: 1:20-1:200

## Validations



Hela cells were subjected to SDS PAGE followed by western blot with Catalog No:108061(ANKLE1 Antibody) at dilution of 1:500



Immunohistochemistry of paraffin-embedded human breast cancer tissue slide using Catalog No:108061(ANKLE1 Antibody) at dilution of 1:50 (under 40x lens)