

# ANGPTL2 antibody



Catalog Number: 108056

## Product name

ANGPTL2 antibody

## Immunogen

[Human ANGPTL2 Recombinant protein \(GST tag\)](#)

## Specificity

Human, Mouse, Rat; other species not tested.

## Antibody description

ANGPTL2 Rabbit Polyclonal antibody. Positive IHC detected in human heart tissue, human spleen tissue. Positive IP detected in mouse testis tissue. Positive WB detected in mouse small intestine tissue, mouse heart tissue, mouse spleen tissue, mouse testis tissue. Observed molecular weight by Western-blot: 57-64 kDa

## Preparation

This antibody was obtained by immunization of ANGPTL2 recombinant protein (Accession Number: NM\_012098). Purification method: Antigen affinity purified.

## Formulation

PBS with 0.1% sodium azide and 50% glycerol pH 7.3.

## Storage

Store at -20°C. DO NOT ALIQUOT

## Clonality

Polyclonal

## Ig Type

Rabbit IgG

## Applications

ELISA, WB, IHC, IP

## Dilutions

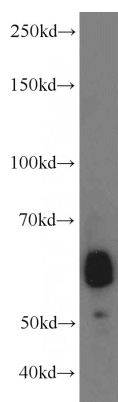
Recommended Dilution:

WB: 1:500-1:5000

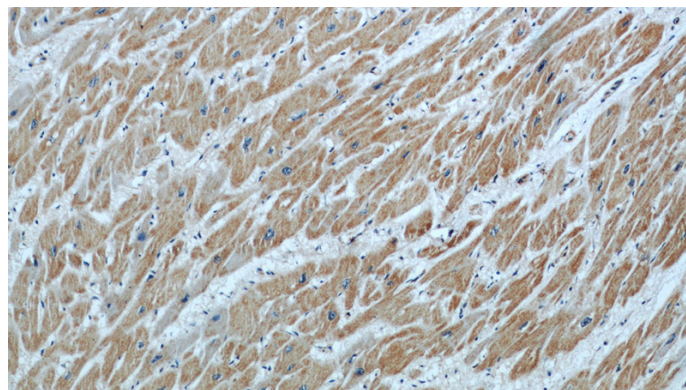
IP: 1:200-1:2000

IHC: 1:20-1:200

## Validations



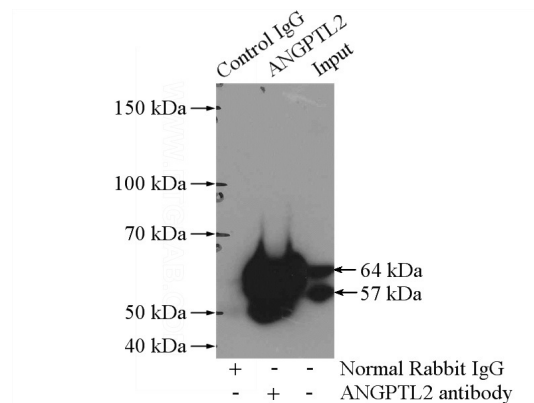
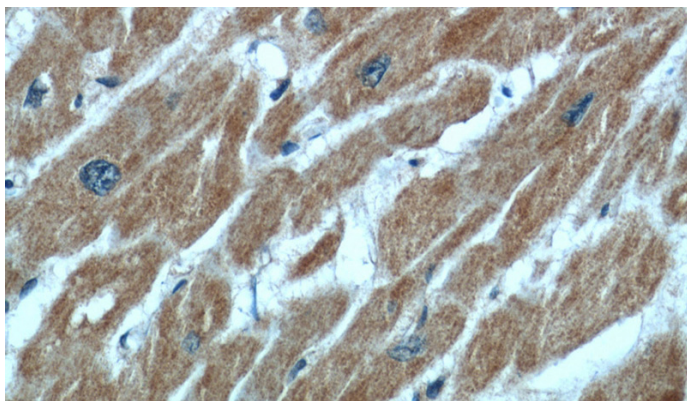
mouse small intestine tissue were subjected to SDS PAGE followed by western blot with Catalog No:108056(ANGPTL2 antibody) at dilution of 1:300



Immunohistochemical of paraffin-embedded human heart using Catalog No:108056(ANGPTL2 antibody) at dilution of 1:50 (under 10x lens)

# ANGPTL2 antibody

Catalog Number: 108056



Immunohistochemical of paraffin-embedded human heart using Catalog No:108056(ANGPTL2 antibody) at dilution of 1:50 (under 40x lens)

IP Result of anti-ANGPTL2 (IP:Catalog No:108056, 4ug; Detection:Catalog No:108056 1:500) with mouse testis tissue lysate 4800ug.