

APOL2 antibody



Catalog Number: 108033

Product name

APOL2 antibody

IHC: 1:20-1:200

IF: 1:10-1:100

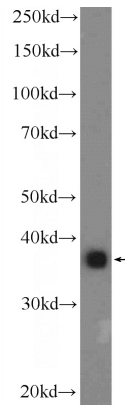
Specificity

Human; other species not tested.

Validations

Antibody description

APOL2 Rabbit Polyclonal antibody. Positive WB detected in A549 cells, A431 cells, HeLa cells. Positive IF detected in HeLa cells. Positive IHC detected in human lung cancer tissue. Observed molecular weight by Western-blot: 37 kDa



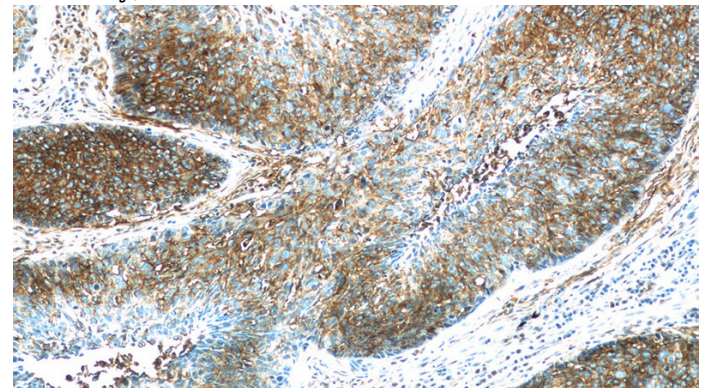
Preparation

This antibody was obtained by immunization of APOL2 recombinant protein (Accession Number: XM_011530078). Purification method: Protein A purified.

A549 cells were subjected to SDS PAGE followed by western blot with Catalog No:108033(APOL2 Antibody) at dilution of 1:2000

Formulation

PBS with 0.1% sodium azide and 50% glycerol pH 7.3.



Storage

Store at -20°C. DO NOT ALIQUOT

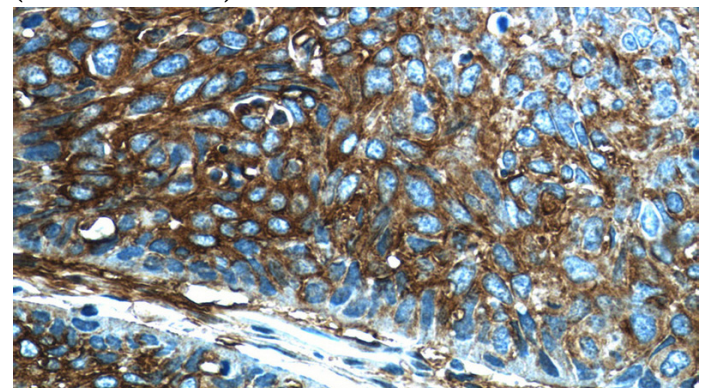
Clonality

Polyclonal

Immunohistochemistry of paraffin-embedded human lung cancer tissue slide using Catalog No:108033(APOL2 Antibody) at dilution of 1:200 (under 10x lens)

Ig Type

Rabbit IgG



Applications

ELISA, WB, IHC, IF

Dilutions

Recommended Dilution:

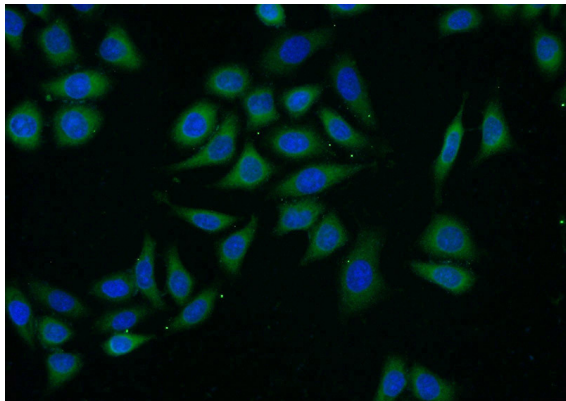
WB: 1:1000-1:10000

Immunohistochemistry of paraffin-embedded

APOL2 antibody

Catalog Number: 108033

human lung cancer tissue slide using Catalog No:108033(APOL2 Antibody) at dilution of 1:200 (under 40x lens)



Immunofluorescent analysis of (-20oc Ethanol) fixed HeLa cells using Catalog No:108033(APOL2 Antibody) at dilution of 1:25 and Alexa Fluor 488-conjugated AffiniPure Goat Anti-Rabbit IgG(H+L)