

# APOL1 antibody



Catalog Number: 108032

## Product name

APOL1 antibody

## Specificity

Human; other species not tested.

## Antibody description

APOL1 Rabbit Polyclonal antibody. Positive WB detected in human blood tissue, A2780 cells, A549 cells, HeLa cells, HepG2 cells, MCF7 cells, SKOV-3 cells, SW 1990 cells. Positive IP detected in HepG2 cells. Positive IHC detected in human kidney tissue, human liver tissue, human pancreas tissue, human spleen tissue, human testis tissue. Positive IF detected in HepG2 cells. Positive FC detected in HepG2 cells. Observed molecular weight by Western-blot: 39 kDa

## Preparation

This antibody was obtained by immunization of APOL1 recombinant protein (Accession Number: BC017331). Purification method: Antigen affinity purified.

## Formulation

PBS with 0.1% sodium azide and 50% glycerol pH 7.3.

## Storage

Store at -20°C. DO NOT ALIQUOT

## Clonality

Polyclonal

## Ig Type

Rabbit IgG

## Applications

ELISA, WB, IHC, IF, IP, FC

## Dilutions

Recommended Dilution:

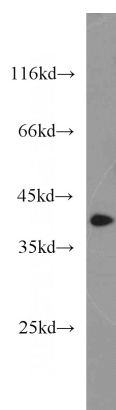
WB: 1:200-1:2000

IP: 1:200-1:2000

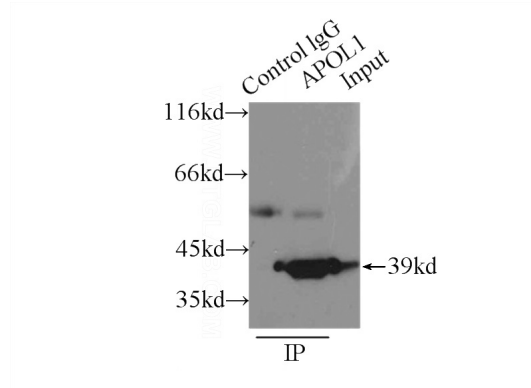
IHC: 1:20-1:200

IF: 1:10-1:100

## Validations



human blood tissue were subjected to SDS PAGE followed by western blot with Catalog No:108032(APOL1 antibody) at dilution of 1:1000

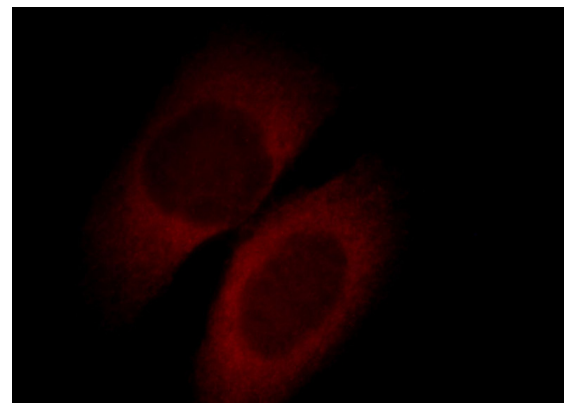
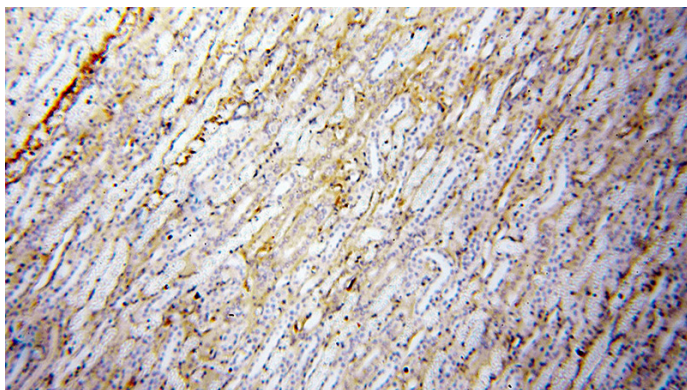


IP Result of anti-APOL1 (IP:Catalog No:108032, 3ug; Detection:Catalog No:108032 1:500) with HepG2 cells lysate 6000ug.

# APOL1 antibody

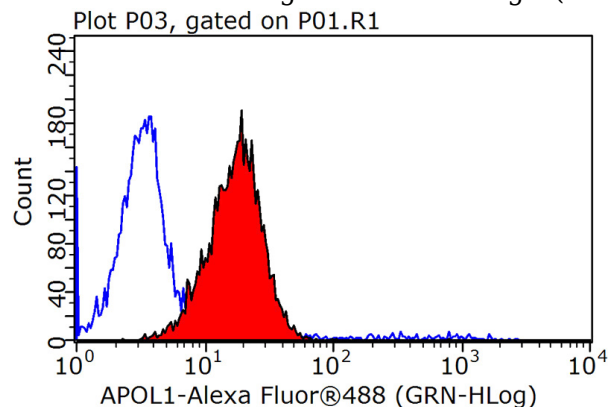
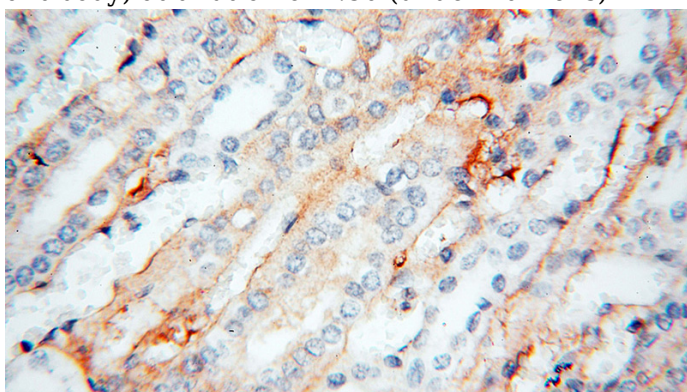


Catalog Number: 108032



Immunohistochemical of paraffin-embedded human kidney using Catalog No:108032(APOL1 antibody) at dilution of 1:50 (under 10x lens)

Immunofluorescent analysis of HepG2 cells, using APOL1 antibody Catalog No: at 1:25 dilution and Rhodamine-labeled goat anti-rabbit IgG (red).



Immunohistochemical of paraffin-embedded human kidney using Catalog No:108032(APOL1 antibody) at dilution of 1:50 (under 40x lens)

1X10<sup>6</sup> HepG2 cells were stained with 0.2ug APOL1 antibody (Catalog No:108032, red) and control antibody (blue). Fixed with 90% MeOH blocked with 3% BSA (30 min). Alexa Fluor 488-conjugated AffiniPure Goat Anti-Rabbit IgG(H+L) with dilution 1:1000.