

APOBEC2 antibody



Catalog Number: 108024

Product name

APOBEC2 antibody

WB: 1:500-1:5000

IP: 1:200-1:2000

Specificity

Human, Mouse, Rat; other species not tested.

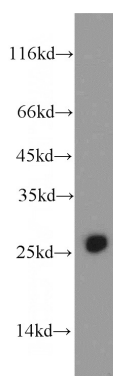
IHC: 1:20-1:200

IF: 1:20-1:200

Antibody description

APOBEC2 Rabbit Polyclonal antibody. Positive IP detected in mouse skeletal muscle tissue. Positive WB detected in mouse skeletal muscle tissue, mouse heart tissue, mouse skin tissue. Positive IHC detected in human heart tissue. Positive IF detected in HeLa cells. Observed molecular weight by Western-blot: 26 kDa

Validations



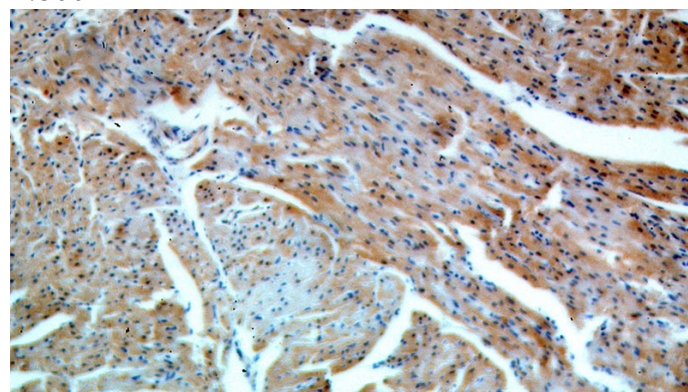
Preparation

This antibody was obtained by immunization of APOBEC2 recombinant protein (Accession Number: NM_006789). Purification method: Antigen affinity purified.

mouse skeletal muscle tissue were subjected to SDS PAGE followed by western blot with Catalog No:108024(APOBEC2 antibody) at dilution of 1:500

Formulation

PBS with 0.02% sodium azide and 50% glycerol pH 7.3.



Immunohistochemical of paraffin-embedded human heart using Catalog No:108024(APOBEC2 antibody) at dilution of 1:100 (under 10x lens)

Storage

Store at -20°C. DO NOT ALIQUOT

Clonality

Polyclonal

Ig Type

Rabbit IgG

Applications

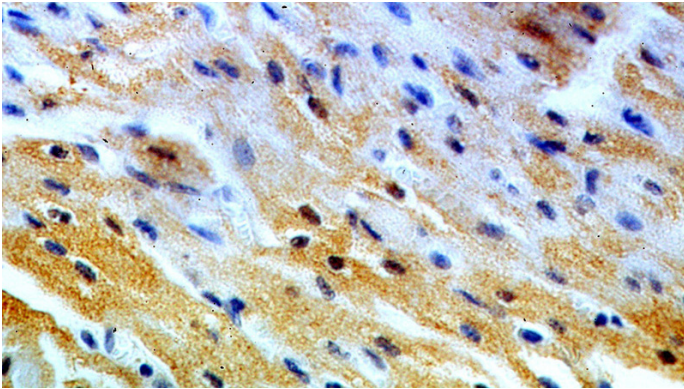
ELISA, WB, IHC, IP, IF

Dilutions

Recommended Dilution:

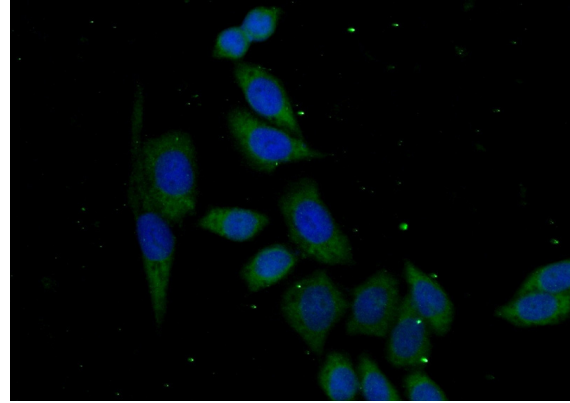
APOBEC2 antibody

Catalog Number: 108024



Immunohistochemical of paraffin-embedded human heart using Catalog No:108024(APOBEC2 antibody) at dilution of 1:100 (under 40x lens)

IP Result of anti-APOBEC2 (IP:Catalog No:108024, 4ug; Detection:Catalog No:108024 1:500) with mouse skeletal muscle tissue lysate 4000ug.



Immunofluorescent analysis of (-20oc Ethanol) fixed HeLa cells using Catalog No:108024(APOBEC2 Antibody) at dilution of 1:50 and Alexa Fluor 488-conjugated AffiniPure Goat Anti-Rabbit IgG(H+L)

