

APOB antibody

Catalog Number: 108023

Product name

APOB antibody

IHC: 1:20-1:200

IF: 1:20-1:200

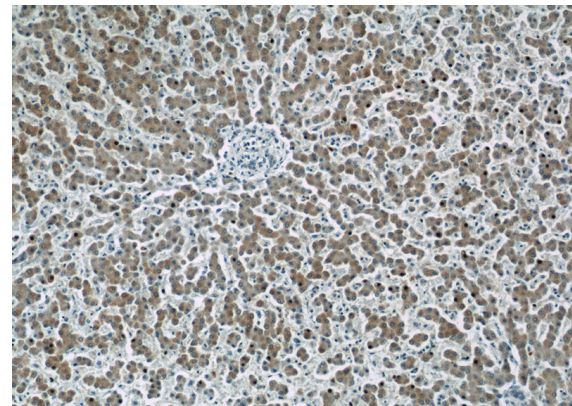
Specificity

Human, Mouse; other species not tested.

Validations

Antibody description

APOB Rabbit Polyclonal antibody. Positive WB detected in mouse liver tissue, HEK-293 cells, HepG2 cells, L02 cells. Positive IHC detected in human liver tissue. Positive IF detected in HepG2 cells. Observed molecular weight by Western-blot: 130-150 kDa, 200-250 kDa



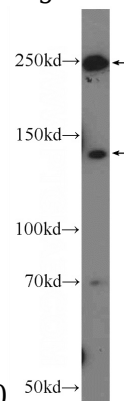
Preparation

This antibody was obtained by immunization of Peptide (Accession Number: NM_000384). Purification method: Antigen affinity purified.

Immunohistochemistry of paraffin-embedded human liver slide using Catalog No:108023(APOB

Formulation

PBS with 0.02% sodium azide and 50% glycerol pH 7.3.



Antibody) at dilution of 1:50

Storage

Store at -20°C. DO NOT ALIQUOT

mouse liver tissue were subjected to SDS PAGE followed by western blot with Catalog No:108023(APOB Antibody) at dilution of 1:600

Clonality

Polyclonal

Ig Type

Rabbit IgG

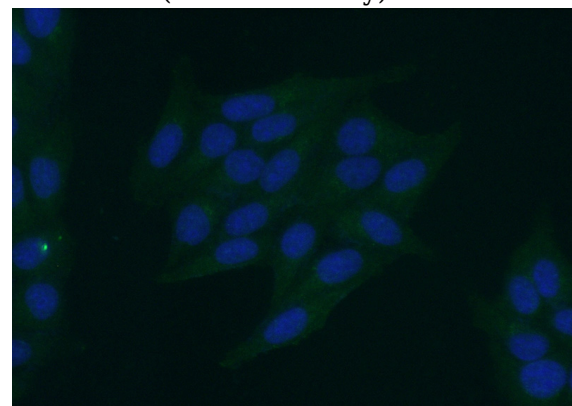
Applications

ELISA, IHC, WB, IF

Dilutions

Recommended Dilution:

WB: 1:200-1:2000



Immunofluorescent analysis of (-20oc Ethanol) fixed HepG2 cells using Catalog No:108023(APOB

APOB antibody



Catalog Number: 108023

Antibody) at dilution of 1:50 and Alexa Fluor 488- conjugated AffiniPure Goat Anti-Rabbit IgG(H+L)