

Amphiphysin antibody



Catalog Number: 108004

Product name

Amphiphysin antibody

IP: 1:500-1:5000

IHC: 1:20-1:200

Specificity

Human, Mouse, Rat; other species not tested.

Antibody description

Amphiphysin Rabbit Polyclonal antibody. Positive IHC detected in human pancreas cancer tissue. Positive IP detected in mouse brain tissue. Positive WB detected in mouse brain tissue, mouse lung tissue. Observed molecular weight by Western-blot: 115-125 kDa

Preparation

This antibody was obtained by immunization of Amphiphysin recombinant protein (Accession Number: NM_001635). Purification method: Antigen affinity purified.

Formulation

PBS with 0.02% sodium azide and 50% glycerol pH 7.3.

Storage

Store at -20°C. DO NOT ALIQUOT

Clonality

Polyclonal

Ig Type

Rabbit IgG

Applications

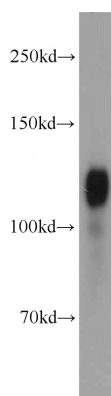
ELISA, WB, IHC, IP

Dilutions

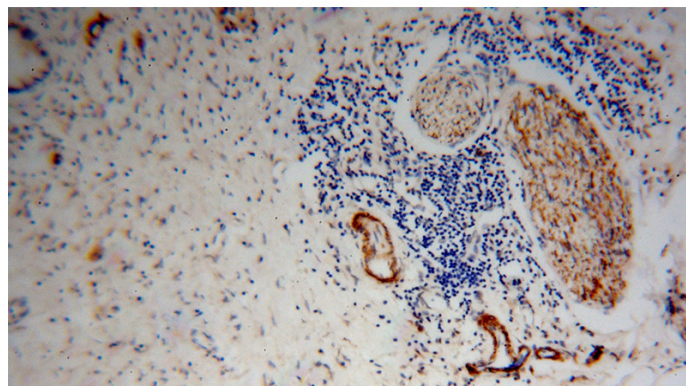
Recommended Dilution:

WB: 1:500-1:5000

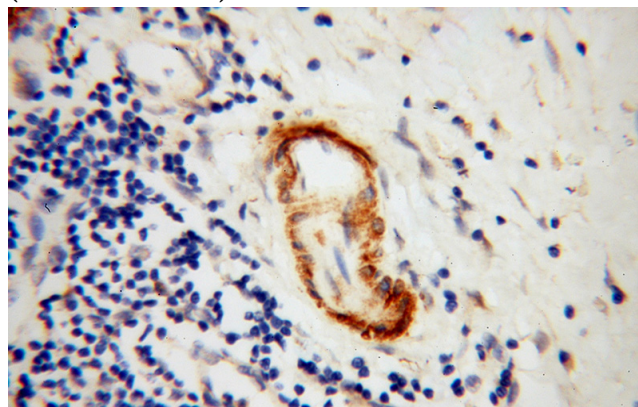
Validations



mouse brain tissue were subjected to SDS PAGE followed by western blot with Catalog No:108004(AMPH antibody) at dilution of 1:1500



Immunohistochemical of paraffin-embedded human pancreas cancer using Catalog No:108004(AMPH antibody) at dilution of 1:100 (under 10x lens)



Immunohistochemical of paraffin-embedded

Amphiphysin antibody



Catalog Number: 108004

human pancreas cancer using Catalog No:108004(AMPH antibody) at dilution of 1:100 (under 40x lens)

IP Result of anti-AMPH (IP:Catalog No:108004, 4ug; Detection:Catalog No:108004 1:1500) with mouse brain tissue lysate 4000ug.

