

AMMECR1 antibody



Catalog Number: 107996

Product name

AMMECR1 antibody

Specificity

Human, Mouse; other species not tested.

Antibody description

AMMECR1 Rabbit Polyclonal antibody. Positive WB detected in Jurkat cells, mouse liver tissue, mouse uterus tissue. Positive IHC detected in human cerebellum tissue. Observed molecular weight by Western-blot: 45 kDa

Preparation

This antibody was obtained by immunization of AMMECR1 recombinant protein (Accession Number: NM_001025580). Purification method: Antigen affinity purified.

Formulation

PBS with 0.1% sodium azide and 50% glycerol pH 7.3.

Storage

Store at -20°C. DO NOT ALIQUOT

Clonality

Polyclonal

Ig Type

Rabbit IgG

Applications

ELISA, WB, IHC

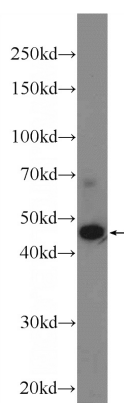
Dilutions

Recommended Dilution:

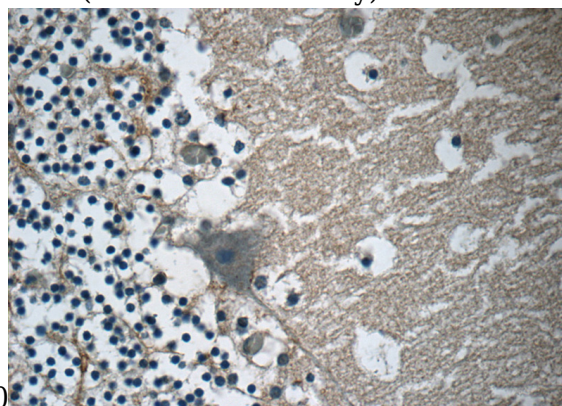
WB: 1:200-1:2000

IHC: 1:20-1:200

Validations



Jurkat cells were subjected to SDS PAGE followed by western blot with Catalog No:107996(AMMECR1 Antibody) at dilution of



Immunohistochemistry of paraffin-embedded human cerebellum tissue slide using Catalog No:107996(AMMECR1 Antibody) at dilution of 1:50 (under 40x lens)