

Product name

AMFR antibody

Recommended Dilution:

WB: 1:500-1:5000

Specificity

Human, Mouse, Rat; other species not tested.

IP: 1:200-1:2000

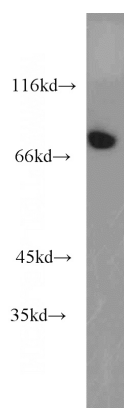
IHC: 1:20-1:200

Antibody description

AMFR Rabbit Polyclonal antibody. Positive WB detected in HepG2 cells. Positive IP detected in HepG2 cells. Positive IHC detected in human ovary tissue, human heart tissue, human kidney tissue, human liver tissue, human placenta tissue, human skin tissue, human testis tissue. Positive IF detected in HepG2 cells. Observed molecular weight by Western-blot: 73 kDa

IF: 1:10-1:100

Validations



Preparation

This antibody was obtained by immunization of AMFR recombinant protein (Accession Number: NM_001144). Purification method: Antigen affinity purified.

HepG2 cells were subjected to SDS PAGE followed by western blot with Catalog No:107990(AMFR antibody) at dilution of 1:800

Formulation

PBS with 0.02% sodium azide and 50% glycerol pH 7.3.

Storage

Store at -20°C. DO NOT ALIQUOT

Clonality

Polyclonal

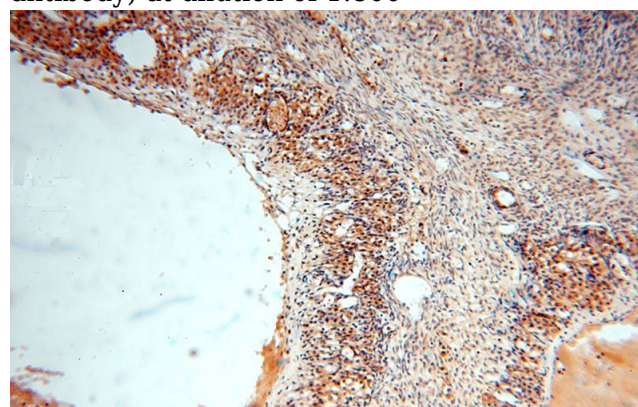
Ig Type

Rabbit IgG

Applications

ELISA, WB, IHC, IF, IP

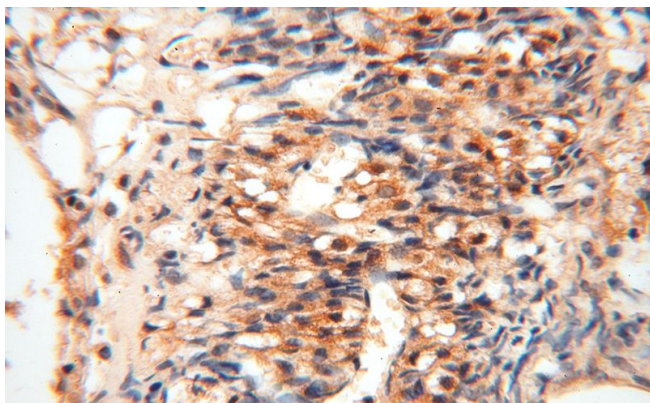
Dilutions



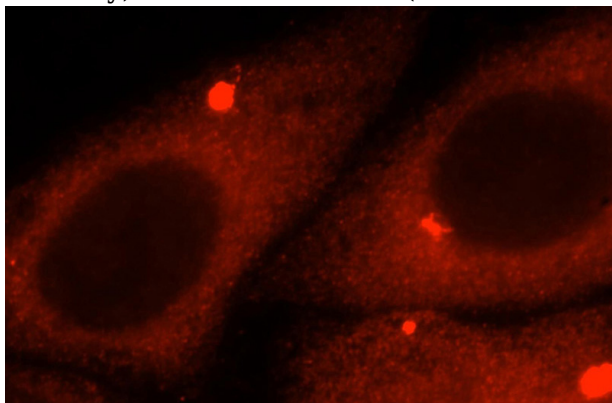
Immunohistochemical of paraffin-embedded human ovary using Catalog No:107990(AMFR antibody) at dilution of 1:100 (under 10x lens)

AMFR antibody

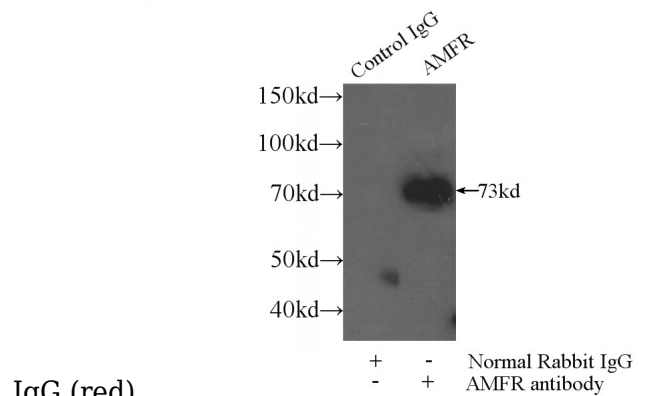
Catalog Number: 107990



Immunohistochemical of paraffin-embedded human ovary using Catalog No:107990(AMFR antibody) at dilution of 1:100 (under 40x lens)



Immunofluorescent analysis of HepG2 cells, using AMFR antibody Catalog No:107990 at 1:25 dilution and Rhodamine-labeled goat anti-rabbit



IgG (red).

IP Result of anti-AMFR (IP:Catalog No:107990, 3ug; Detection:Catalog No:107990 1:800) with HepG2 cells lysate 2400ug.