

# ALDOB antibody



Catalog Number: 107977

## Product name

ALDOB antibody

WB: 1:500-1:5000

IP: 1:500-1:5000

## Specificity

Human, Mouse, Rat; other species not tested.

IHC: 1:20-1:200

IF: 1:10-1:100

## Antibody description

ALDOB Rabbit Polyclonal antibody. Positive IHC detected in human liver tissue. Positive IF detected in HepG2 cells. Positive WB detected in mouse kidney tissue, mouse liver tissue, mouse skeletal muscle tissue. Positive IP detected in mouse kidney tissue. Observed molecular weight by Western-blot: 35-40 kDa

## Preparation

This antibody was obtained by immunization of ALDOB recombinant protein (Accession Number: BC029399). Purification method: Antigen affinity purified.

## Formulation

PBS with 0.02% sodium azide and 50% glycerol pH 7.3.

## Storage

Store at -20°C. DO NOT ALIQUOT

## Clonality

Polyclonal

## Ig Type

Rabbit IgG

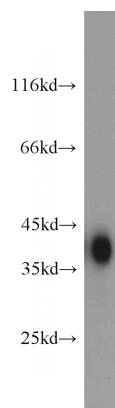
## Applications

ELISA, WB, IHC, IF, IP

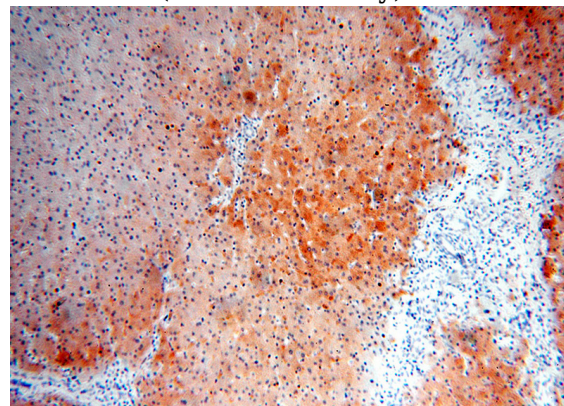
## Dilutions

Recommended Dilution:

## Validations



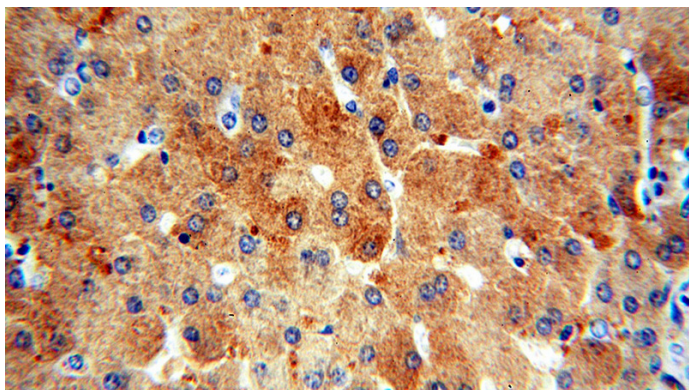
mouse kidney tissue were subjected to SDS PAGE followed by western blot with Catalog No:107977(ALDOB antibody) at dilution of 1:4000



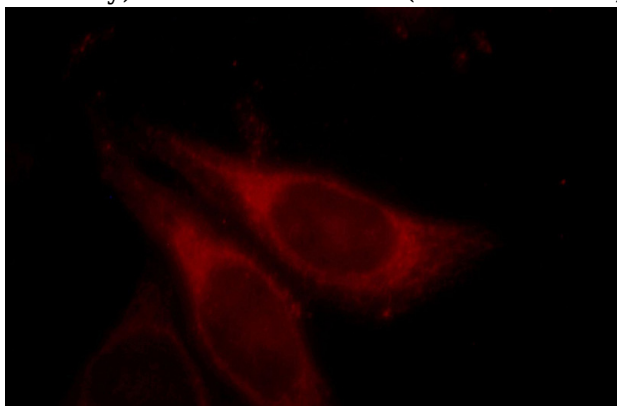
Immunohistochemical of paraffin-embedded human liver using Catalog No:107977(ALDOB antibody) at dilution of 1:100 (under 10x lens)

# ALDOB antibody

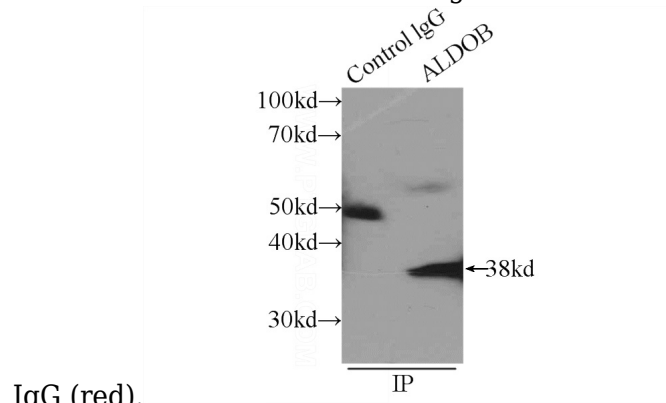
Catalog Number: 107977



Immunohistochemical of paraffin-embedded human liver using Catalog No:107977(ALDOB antibody) at dilution of 1:100 (under 40x lens)



Immunofluorescent analysis of HepG2 cells, using ALDOB antibody Catalog No:107977 at 1:25 dilution and Rhodamine-labeled goat anti-rabbit



IP Result of anti-ALDOB (IP:Catalog No:107977, 4ug; Detection:Catalog No:107977 1:1000) with mouse kidney tissue lysate 4000ug.