

# ALDH4A1 antibody



Catalog Number: 107971

## Product name

ALDH4A1 antibody

## Specificity

Human, Mouse, Rat; other species not tested.

## Antibody description

ALDH4A1 Rabbit Polyclonal antibody. Positive IP detected in mouse skeletal muscle tissue. Positive WB detected in human heart tissue, HepG2 cells, human brain tissue, human liver tissue, human skeletal muscle tissue, K-562 cells, mouse skeletal muscle tissue, mouse small intestine tissue, rat heart tissue. Positive IHC detected in human liver tissue, human prostate cancer tissue. Observed molecular weight by Western-blot: 62kd

## Preparation

This antibody was obtained by immunization of ALDH4A1 recombinant protein (Accession Number: NM\_003748). Purification method: Antigen affinity purified.

## Formulation

PBS with 0.1% sodium azide and 50% glycerol pH 7.3.

## Storage

Store at -20°C. DO NOT ALIQUOT

## Clonality

Polyclonal

## Ig Type

Rabbit IgG

## Applications

ELISA, WB, IHC, IP

## Dilutions

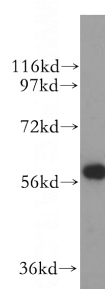
Recommended Dilution:

WB: 1:500-1:5000

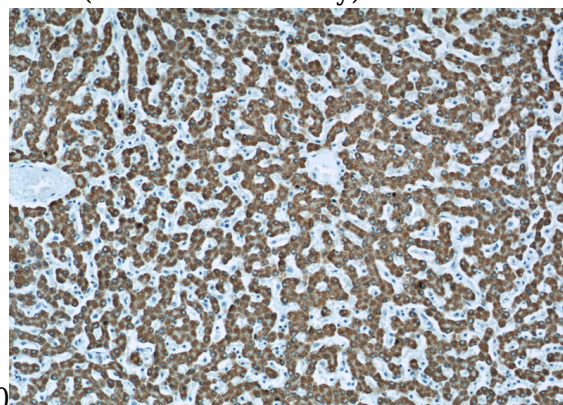
IP: 1:200-1:2000

IHC: 1:20-1:200

## Validations



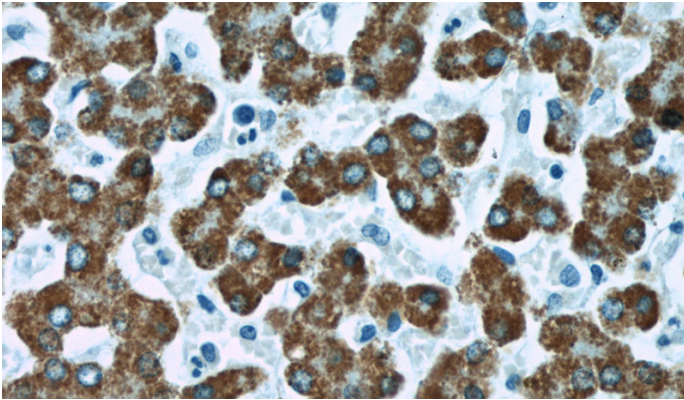
human heart tissue were subjected to SDS PAGE followed by western blot with Catalog No:107971(ALDH4A1 antibody) at dilution of



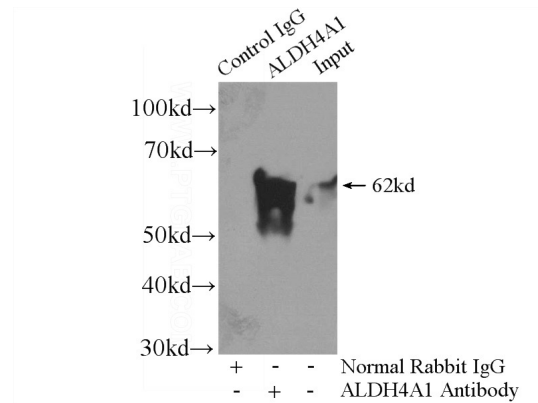
Immunohistochemical of paraffin-embedded human liver using Catalog No:107971(ALDH4A1 antibody) at dilution of 1:100 (under 10x lens)

# ALDH4A1 antibody

Catalog Number: 107971



Immunohistochemical of paraffin-embedded human liver using Catalog No:107971(ALDH4A1 antibody) at dilution of 1:100 (under 40x lens)



IP Result of anti-ALDH4A1 (IP:Catalog No:107971, 4ug; Detection:Catalog No:107971 1:800) with mouse skeletal muscle tissue lysate 3600ug.