

ALDH2 antibody



Catalog Number: 107966

Product name

ALDH2 antibody

Specificity

Human, Mouse, Rat; other species not tested.

Antibody description

ALDH2 Rabbit Polyclonal antibody. Positive IHC detected in human liver tissue, human heart tissue. Positive IP detected in mouse lung tissue. Positive WB detected in mouse lung tissue, human heart tissue, human kidney tissue, human liver tissue, MCF7 cells, mouse skeletal muscle tissue, rat lung tissue. Observed molecular weight by Western-blot: 50-55 kDa

Preparation

This antibody was obtained by immunization of ALDH2 recombinant protein (Accession Number: NM_000690). Purification method: Antigen affinity purified.

Formulation

PBS with 0.02% sodium azide and 50% glycerol pH 7.3.

Storage

Store at -20°C. DO NOT ALIQUOT

Clonality

Polyclonal

Ig Type

Rabbit IgG

Applications

ELISA, WB, IHC, IP

Dilutions

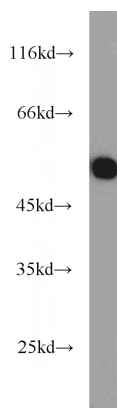
Recommended Dilution:

WB: 1:500-1:5000

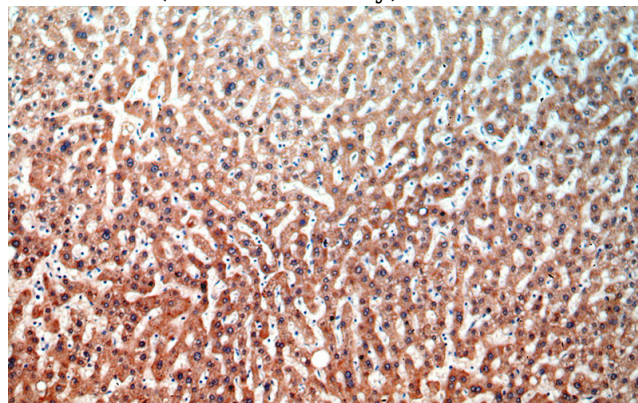
IP: 1:500-1:5000

IHC: 1:20-1:200

Validations



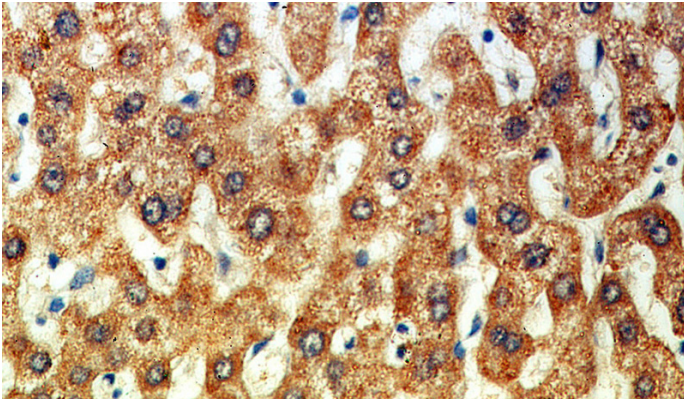
mouse lung tissue were subjected to SDS PAGE followed by western blot with Catalog No:107966(ALDH2 antibody) at dilution of 1:1000



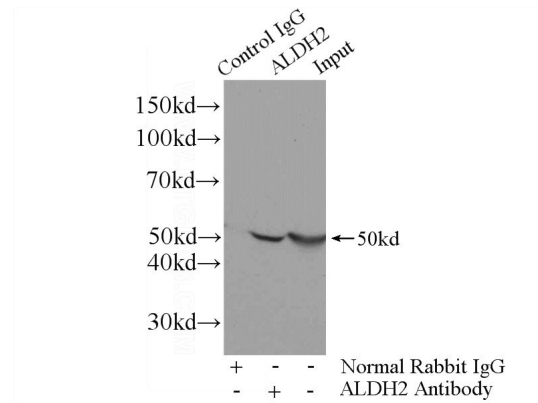
Immunohistochemical of paraffin-embedded human liver using Catalog No:107966(ALDH2 antibody) at dilution of 1:100 (under 10x lens)

ALDH2 antibody

Catalog Number: 107966



Immunohistochemical of paraffin-embedded human liver using Catalog No:107966(ALDH2 antibody) at dilution of 1:100 (under 40x lens)



IP Result of anti-ALDH2 (IP:Catalog No:107966, 4ug; Detection:Catalog No:107966 1:1000) with mouse lung tissue lysate 2800ug.