

# ALDH1A1 antibody



Catalog Number: 107958

## Product name

ALDH1A1 antibody

Recommended Dilution:

WB: 1:500-1:5000

## Specificity

Human, Mouse, Rat; other species not tested.

IP: 1:200-1:2000

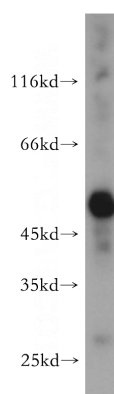
IHC: 1:20-1:200

## Antibody description

ALDH1A1 Rabbit Polyclonal antibody. Positive IF detected in HepG2 cells. Positive IHC detected in human eye tissue, human liver tissue, human testis tissue, mouse testis tissue. Positive IP detected in mouse liver tissue. Positive WB detected in mouse liver tissue, HL-60 cells, human liver tissue, K-562 cells. Observed molecular weight by Western-blot: 50-55 kDa

IF: 1:20-1:200

## Validations



## Preparation

This antibody was obtained by immunization of ALDH1A1 recombinant protein (Accession Number: NM\_000689). Purification method: Antigen affinity purified.

mouse liver tissue were subjected to SDS PAGE followed by western blot with Catalog No:107958(ALDH1A1 antibody) at dilution of 1:400

## Formulation

PBS with 0.02% sodium azide and 50% glycerol pH 7.3.

## Storage

Store at -20°C. DO NOT ALIQUOT

## Clonality

Polyclonal

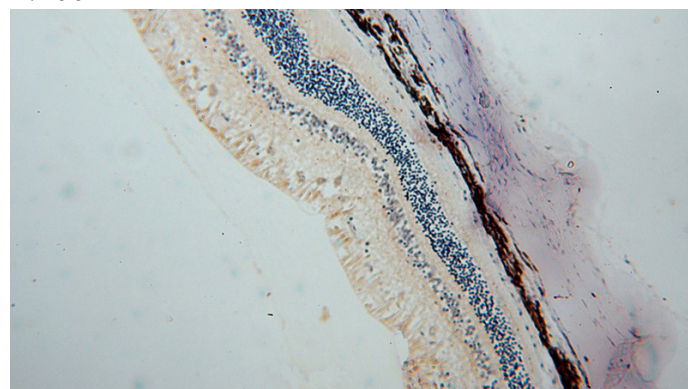
## Ig Type

Rabbit IgG

## Applications

ELISA, WB, IHC, IP, IF

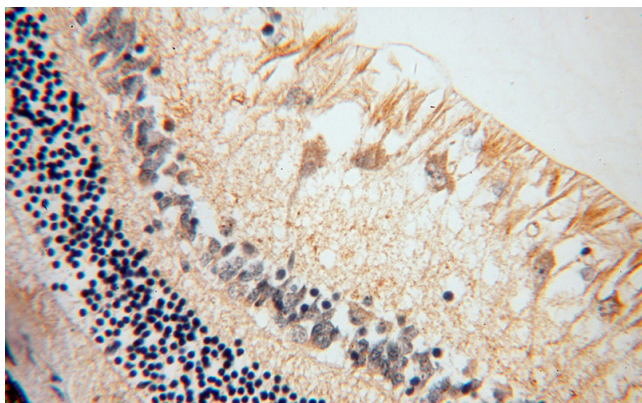
## Dilutions



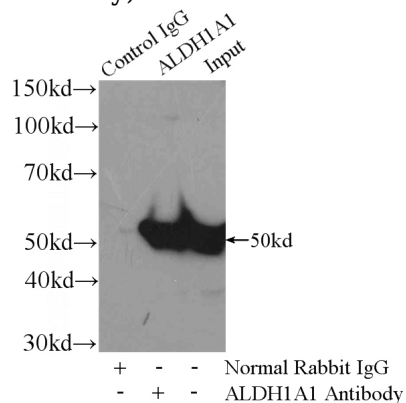
Immunohistochemical of paraffin-embedded human eye using Catalog No:107958(ALDH1A1 antibody) at dilution of 1:100 (under 10x lens)

# ALDH1A1 antibody

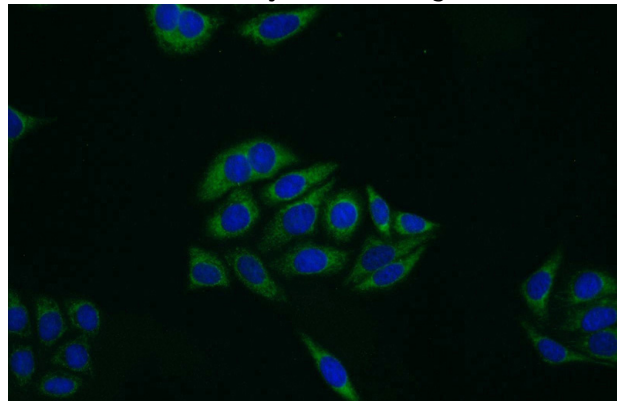
Catalog Number: 107958



Immunohistochemical of paraffin-embedded human eye using Catalog No:107958(ALDH1A1 antibody) at dilution of 1:100 (under 40x lens)



IP Result of anti-ALDH1A1 (IP:Catalog No:107958, 4ug; Detection:Catalog No:107958 1:500) with mouse liver tissue lysate 6400ug.



Immunofluorescent analysis of HepG2 cells using Catalog No:107958(ALDH1A1 Antibody) at dilution of 1:50 and Alexa Fluor 488-conjugated AffiniPure Goat Anti-Rabbit IgG(H+L)