

ALS2 antibody

Catalog Number: 107884

Product name

ALS2 antibody

Immunogen

[Human ALS2 Recombinant protein \(His tag\)](#)

Specificity

Human, Mouse, Rat; other species not tested.

Antibody description

ALS2 Rabbit Polyclonal antibody. Positive IP detected in HEK-293 cells. Positive WB detected in HEK-293 cells. Positive IF detected in HEK-293 cells. Positive IHC detected in human pancreas tissue. Observed molecular weight by Western-blot: 185 kDa

Preparation

This antibody was obtained by immunization of ALS2 recombinant protein (Accession Number: BC029174). Purification method: Antigen affinity purified.

Formulation

PBS with 0.02% sodium azide and 50% glycerol pH 7.3.

Storage

Store at -20°C. DO NOT ALIQUOT

Clonality

Polyclonal

Ig Type

Rabbit IgG

Applications

ELISA, WB, IHC, IF, IP

Dilutions

Recommended Dilution:

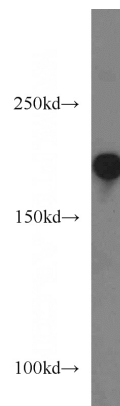
WB: 1:200-1:2000

IP: 1:200-1:1000

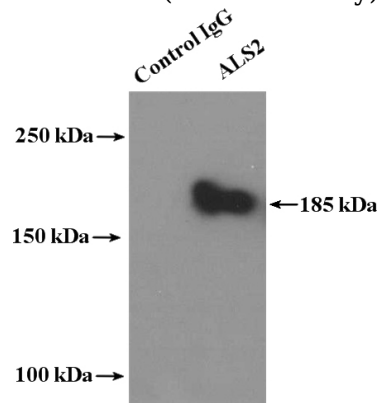
IHC: 1:20-1:200

IF: 1:20-1:200

Validations



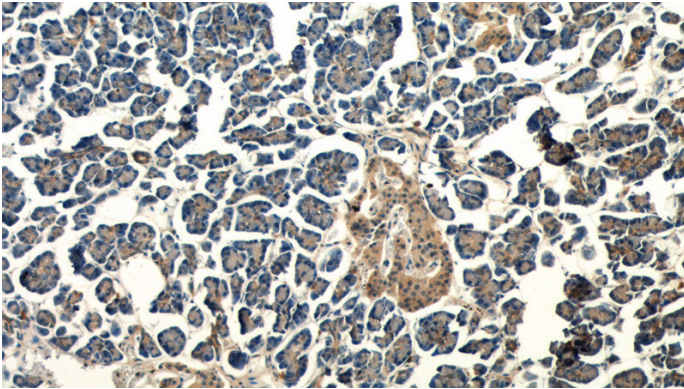
HEK-293 cells were subjected to SDS PAGE followed by western blot with Catalog No:107884(ALS2 antibody) at dilution of 1:500



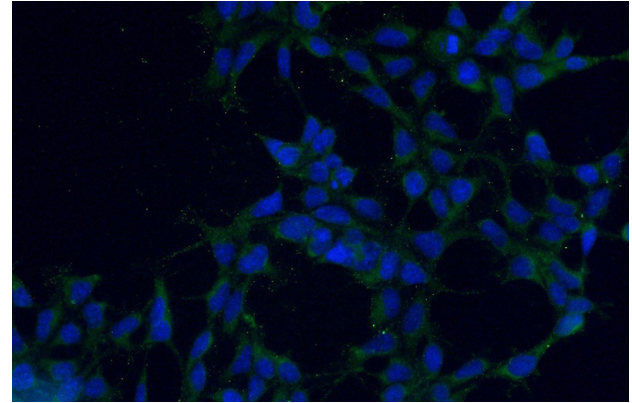
IP Result of anti-ALS2 (IP:Catalog No:107884, 4ug; Detection:Catalog No:107884 1:300) with HEK-293 cells lysate 4000ug.

ALS2 antibody

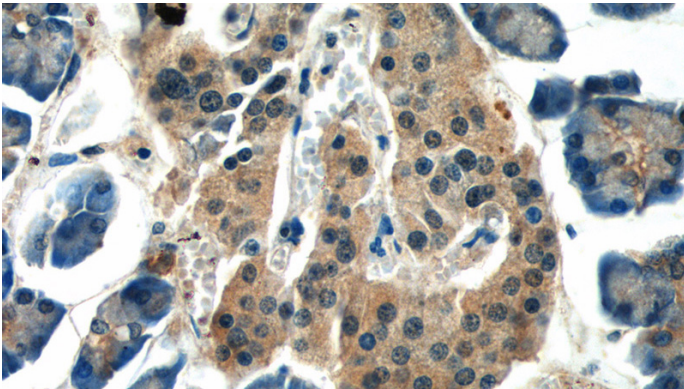
Catalog Number: 107884



Immunohistochemistry of paraffin-embedded human pancreas tissue slide using Catalog No:107884(ALS2 Antibody) at dilution of 1:50 (under 40x lens)



Immunohistochemistry of paraffin-embedded human pancreas tissue slide using Catalog No:107884(ALS2 Antibody) at dilution of 1:50 (under 10x lens)



Immunofluorescent analysis of (-20oc Ethanol) fixed HEK-293 cells using Catalog No:107884(ALS2 Antibody) at dilution of 1:50 and Alexa Fluor 488-conjugated AffiniPure Goat Anti-Rabbit IgG(H+L)