

# alpha Tubulin antibody



Catalog Number: 107874

## Product name

alpha Tubulin antibody

## Specificity

Human, Mouse, Rat; other species not tested.

## Antibody description

alpha Tubulin Rabbit Polyclonal antibody. Positive IP detected in HeLa cells. Positive WB detected in multi-cells/tissue, HeLa cells, mouse brain tissue, mouse colon tissue, mouse eye tissue, mouse liver tissue, mouse lung tissue, mouse uterus tissue, rat brain tissue. Positive IF detected in MCF-7 cells, HeLa cells. Positive IHC detected in human colon cancer tissue, human endometrial cancer tissue, human liver cancer tissue. Positive FC detected in HEK-293 cells. Observed molecular weight by Western-blot: 52kd

## Preparation

This antibody was obtained by immunization of alpha Tubulin recombinant protein (Accession Number: NM\_006082). Purification method: Antigen affinity purified.

## Formulation

PBS with 0.1% sodium azide and 50% glycerol pH 7.3.

## Storage

Store at -20°C. DO NOT ALIQUOT

## Clonality

Polyclonal

## Ig Type

Rabbit IgG

## Applications

ELISA, WB, IP, IHC, IF, FC

## Dilutions

Recommended Dilution:

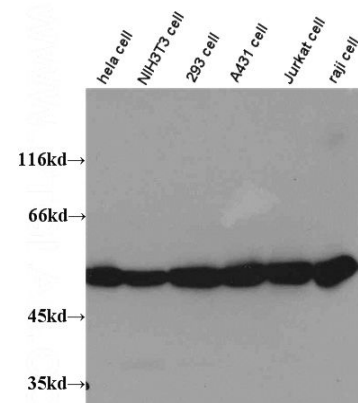
WB: 1:500-1:5000

IP: 1:500-1:5000

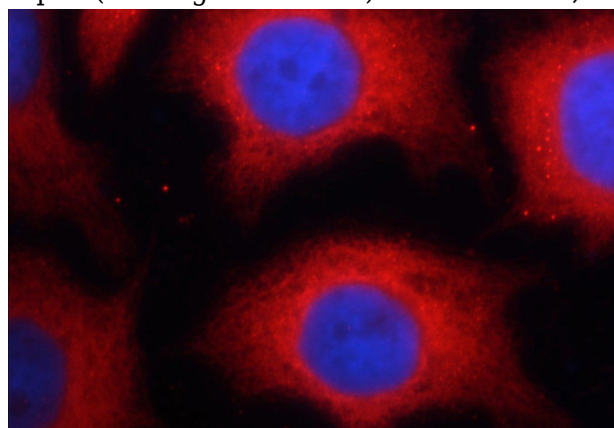
IHC: 1:20-1:200


IF: 1:10-1:100

## Validations



Western blot on multiple cells with anti-Tubulin-Alpha (Catalog No:117297) at dilution 1:1,000.

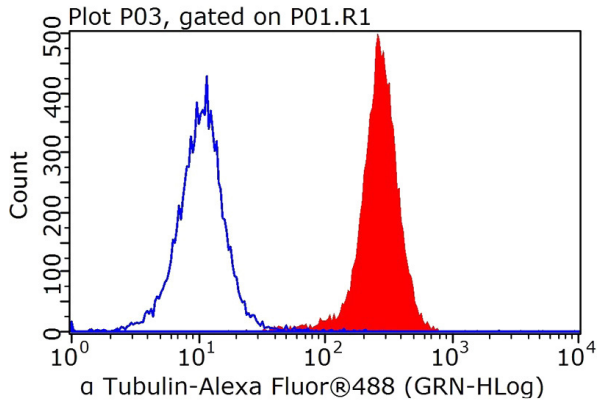


Immunofluorescent analysis of MCF-7 cells using Catalog No:117297(Tubulin-Alpha Antibody) at dilution of 1:25 and Rhodamine-Goat anti-Rabbit IgG 

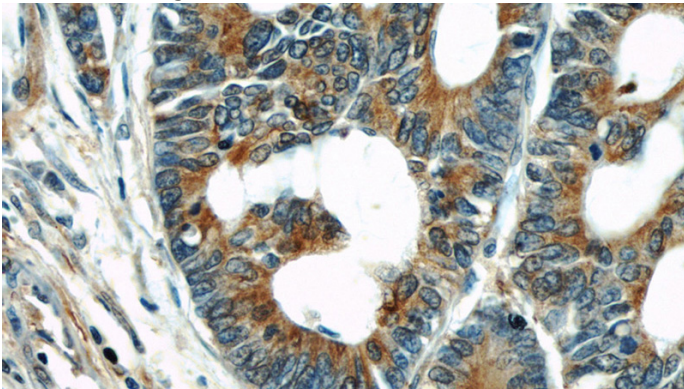
Western blot of HeLa cell with anti-Tubulin-Alpha (Catalog No:117297) at various dilutions.

# alpha Tubulin antibody

Catalog Number: 107874

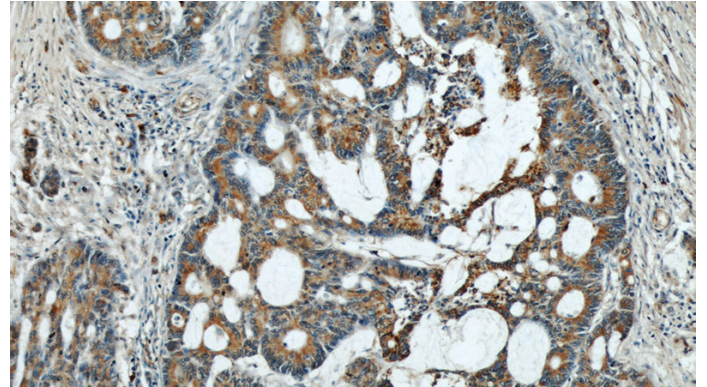


1X10<sup>6</sup> HEK-293 cells were stained with 0.2ug Tubulin-Alpha antibody (Catalog No:117297, red) and control antibody (blue). Fixed with 90% MeOH blocked with 3% BSA (30 min). FITC-Goat anti-Rabbit IgG with dilution 1:100.

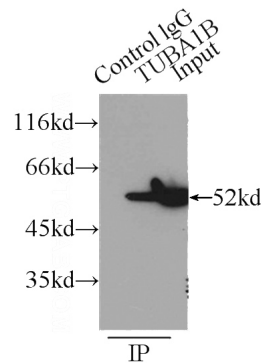


Immunohistochemical of paraffin-embedded human colon cancer using Catalog No:117297(Tubulin-Alpha antibody) at dilution of

1:50 (under 40x lens)



Immunohistochemical of paraffin-embedded human colon cancer using Catalog No:117297(Tubulin-Alpha antibody) at dilution of 1:50 (under 10x lens)



IP Result of anti-Tubulin-Alpha (IP:Catalog No:117297, 3ug; Detection:Catalog No:117297 1:1000) with HeLa cells lysate 5000ug.