

Alpha galactosidase A antibody



Catalog Number: 107870

Product name

Alpha galactosidase A antibody

IP: 1:500-1:5000

IHC: 1:20-1:200

Specificity

Human, Mouse, Rat; other species not tested.

Antibody description

Alpha galactosidase A Rabbit Polyclonal antibody.
Positive IHC detected in human liver tissue, human liver cancer tissue, mouse liver tissue.
Positive WB detected in HeLa cells, HEK-293 cells.
Positive IP detected in HEK-293 cells. Observed molecular weight by Western-blot: 49 kDa

Preparation

This antibody was obtained by immunization of Alpha galactosidase A recombinant protein (Accession Number: NM_000169). Purification method: Antigen affinity purified.

Formulation

PBS with 0.02% sodium azide and 50% glycerol pH 7.3.

Storage

Store at -20°C. DO NOT ALIQUOT

Clonality

Polyclonal

Ig Type

Rabbit IgG

Applications

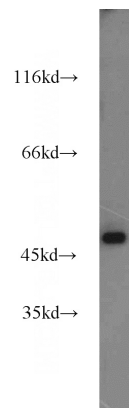
ELISA, IHC, IP, WB

Dilutions

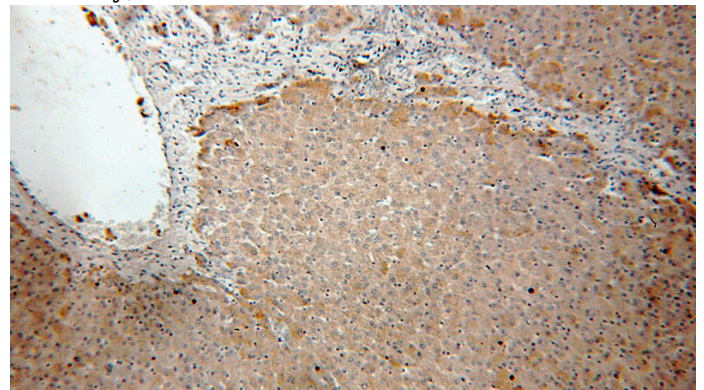
Recommended Dilution:

WB: 1:500-1:5000

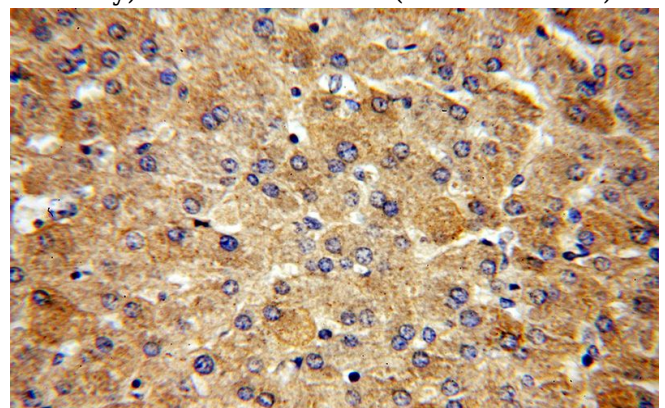
Validations



HeLa cells were subjected to SDS PAGE followed by western blot with Catalog No:107870 (GLA antibody) at dilution of 1:1000



Immunohistochemical of paraffin-embedded human liver using Catalog No:107870 (GLA antibody) at dilution of 1:50 (under 10x lens)



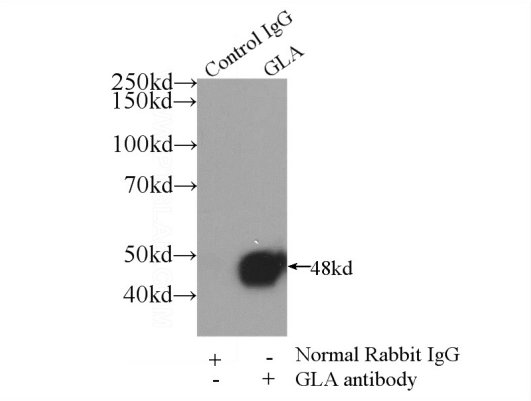
Immunohistochemical of paraffin-embedded human liver using Catalog No:107870 (GLA antibody) at dilution of 1:50 (under 10x lens)

Alpha galactosidase A antibody



Catalog Number: 107870

antibody) at dilution of 1:50 (under 40x lens)



IP Result of anti-GLA (IP:Catalog No:107870, 3ug;
Detection:Catalog No:107870 1:1000) with
HEK-293 cells lysate 1800ug.