

Alpha B Crystallin antibody



Catalog Number: 107868

Product name

Alpha B Crystallin antibody

WB: 1:500-1:5000

IP: 1:200-1:2000

Specificity

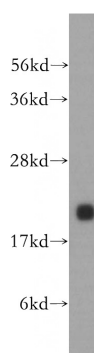
Human, Mouse, Rat; other species not tested.

IHC: 1:20-1:200

Antibody description

Alpha B Crystallin Rabbit Polyclonal antibody.
Positive IHC detected in human eye tissue.
Positive WB detected in human heart tissue,
mouse heart tissue, mouse skeletal muscle tissue.
Positive IP detected in mouse heart tissue.
Observed molecular weight by Western-blot: 20-22
kDa

Validations



Preparation

This antibody was obtained by immunization of Alpha B Crystallin recombinant protein (Accession Number: NM_001368245). Purification method: Antigen affinity purified.

human heart tissue were subjected to SDS PAGE followed by western blot with Catalog No:107868(CRYAB antibody) at dilution of 1:500

Formulation

PBS with 0.02% sodium azide and 50% glycerol pH 7.3.

Storage

Store at -20°C. DO NOT ALIQUOT

Clonality

Polyclonal

Ig Type

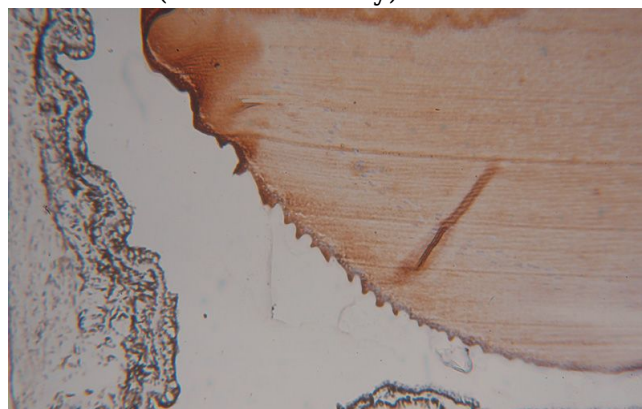
Rabbit IgG

Applications

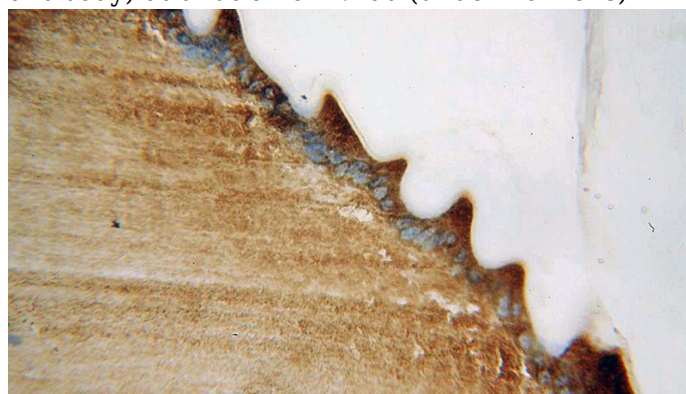
ELISA, WB, IHC, IP

Dilutions

Recommended Dilution:



Immunohistochemical of paraffin-embedded human eye using Catalog No:107868(CRYAB antibody) at dilution of 1:100 (under 10x lens)



Alpha B Crystallin antibody



Catalog Number: 107868

Immunohistochemical of paraffin-embedded human eye using Catalog No:107868(CRYAB antibody) at dilution of 1:100 (under 40x lens)

IP Result of anti-aB-Crystallin (IP:Catalog No:107868, 3ug; Detection:Catalog No:107868 1:500) with mouse heart tissue lysate 4000ug.

