

# alpha Adaptin antibody



Catalog Number: 107866

## Product name

alpha Adaptin antibody

## Specificity

Human, Mouse, Rat; other species not tested.

## Antibody description

alpha Adaptin Rabbit Polyclonal antibody. Positive IHC detected in human ovary tumor tissue. Positive IF detected in HEK-293 cells. Positive IP detected in mouse skeletal muscle tissue. Positive WB detected in HEK-293 cells, human heart tissue, human spleen tissue, mouse spleen tissue. Observed molecular weight by Western-blot: 108 kDa

## Preparation

This antibody was obtained by immunization of alpha Adaptin recombinant protein (Accession Number: BC014214). Purification method: Antigen affinity purified.

## Formulation

PBS with 0.1% sodium azide and 50% glycerol pH 7.3.

## Storage

Store at -20°C. DO NOT ALIQUOT

## Clonality

Polyclonal

## Ig Type

Rabbit IgG

## Applications

ELISA, WB, IHC, IP, IF

## Dilutions

Recommended Dilution:

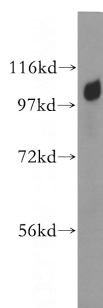
WB: 1:500-1:5000

IP: 1:500-1:5000

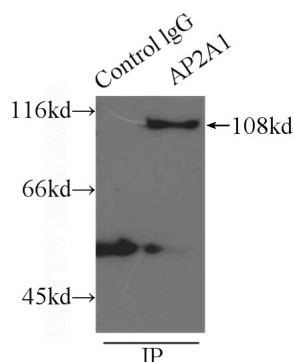
IHC: 1:20-1:200

IF: 1:10-1:100

## Validations



HEK-293 cells were subjected to SDS PAGE followed by western blot with Catalog No:107866(AP2A1 antibody) at dilution of 1:1000

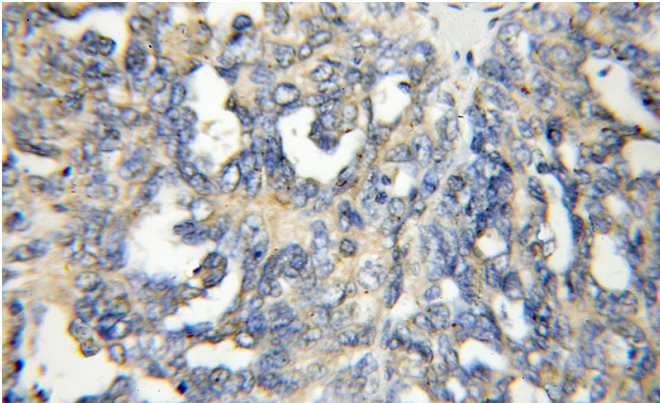


IP Result of anti-AP2A1 (IP:Catalog No:107866, 3ug; Detection:Catalog No:107866 1:1000) with mouse skeletal muscle tissue lysate 3500ug.

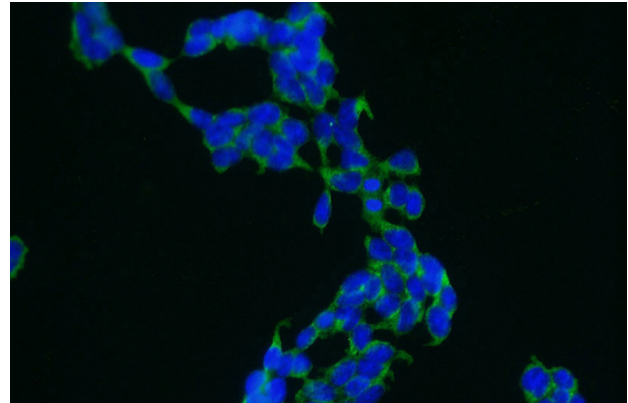
# alpha Adaptin antibody

Catalog Number: 107866

---



Immunohistochemical of paraffin-embedded human ovary tumor using Catalog No:107866(AP2A1 antibody) at dilution of 1:50 (under 10x lens)



Immunofluorescent analysis of HEK-293 cells using Catalog No:107866(AP2A1 Antibody) at dilution of 1:25 and Alexa Fluor 488-conjugated AffiniPure Goat Anti-Rabbit IgG(H+L)