

# alpha Actin antibody



Catalog Number: 107864

## Product name

alpha Actin antibody

WB: 1:500-1:5000

IHC: 1:20-1:200

## Specificity

Human, Mouse; other species not tested.

## Antibody description

alpha Actin Rabbit Polyclonal antibody. Positive IHC detected in human heart tissue, human colon tissue, human skeletal muscle tissue, human small intestine tissue. Positive WB detected in mouse heart tissue. Observed molecular weight by Western-blot: 42-45 kDa

## Preparation

This antibody was obtained by immunization of alpha Actin recombinant protein (Accession Number: NM\_001406483). Purification method: Antigen affinity purified.

## Formulation

PBS with 0.02% sodium azide and 50% glycerol pH 7.3.

## Storage

Store at -20°C. DO NOT ALIQUOT

## Clonality

Polyclonal

## Ig Type

Rabbit IgG

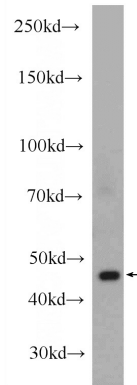
## Applications

ELISA, IHC, WB

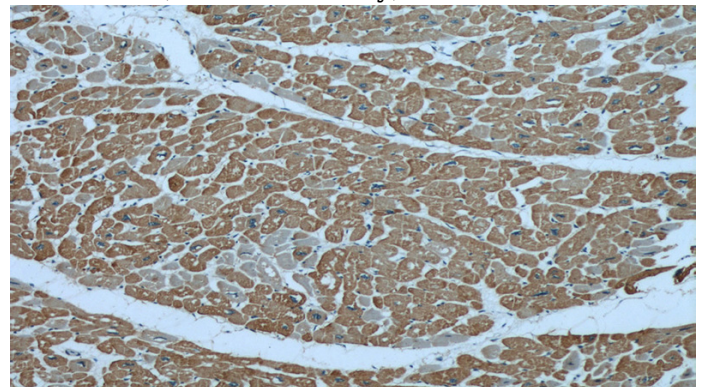
## Dilutions

Recommended Dilution:

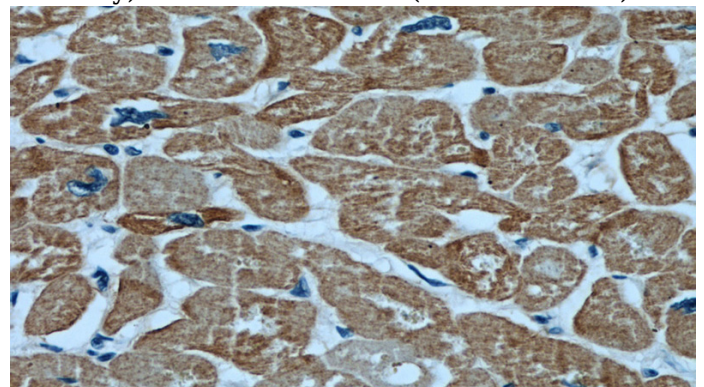
## Validations



mouse heart tissue were subjected to SDS PAGE followed by western blot with Catalog No:107864(ACTC1 Antibody) at dilution of 1:1000



Immunohistochemical of paraffin-embedded human heart using Catalog No:107864(ACTC1 antibody) at dilution of 1:100 (under 10x lens)



Immunohistochemical of paraffin-embedded human heart using Catalog No:107864(ACTC1 antibody) at dilution of 1:100 (under 40x lens)