

## Product name

ADM2 antibody

## Specificity

Human, Mouse; other species not tested.

## Antibody description

ADM2 Rabbit Polyclonal antibody. Positive IHC detected in human stomach tissue, human heart tissue, mouse heart tissue, mouse stomach tissue.

## Preparation

This antibody was obtained by immunization of ADM2 recombinant protein (Accession Number: BC012864). Purification method: Antigen Affinity purified.

## Formulation

PBS with 0.02% sodium azide and 50% glycerol pH 7.3.

## Storage

Store at -20°C. DO NOT ALIQUOT

## Clonality

Polyclonal

## Ig Type

Rabbit IgG

## Applications

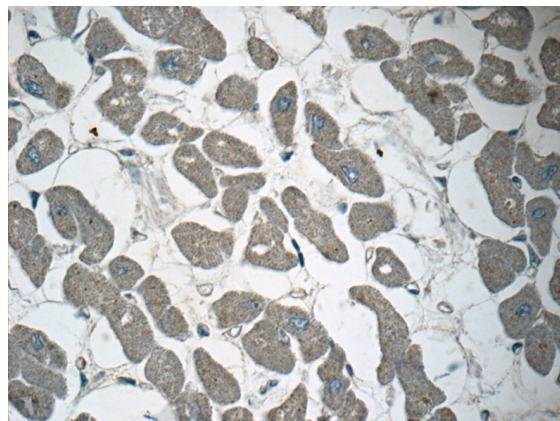
ELISA, IHC

## Dilutions

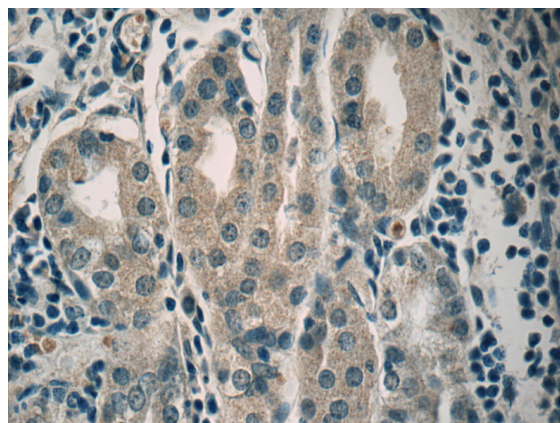
Recommended Dilution:

IHC: 1:20-1:200

## Validations



Immunohistochemistry of paraffin-embedded human heart tissue slide using Catalog No:107795(ADM2 Antibody) at dilution of 1:50 under 40x lens



Immunohistochemistry of paraffin-embedded human stomach tissue slide using Catalog No:107795(ADM2 Antibody) at dilution of 1:50 under 40x lens