

# ADHFE1 antibody



Catalog Number: 107792

## Product name

ADHFE1 antibody

## Immunogen

## Specificity

Human, Mouse, Rat; other species not tested.

## Antibody description

ADHFE1 Rabbit Polyclonal antibody. Positive IHC detected in human liver tissue. Positive IP detected in mouse heart tissue. Positive WB detected in mouse heart tissue, mouse kidney tissue, rat kidney tissue. Observed molecular weight by Western-blot: 45 kDa

## Preparation

This antibody was obtained by immunization of ADHFE1 recombinant protein (Accession Number: BC064634). Purification method: Antigen affinity purified.

## Formulation

PBS with 0.02% sodium azide and 50% glycerol pH 7.3.

## Storage

Store at -20°C. DO NOT ALIQUOT

## Clonality

Polyclonal

## Ig Type

Rabbit IgG

## Applications

ELISA, WB, IHC, IP

## Dilutions

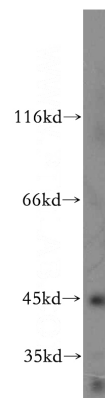
Recommended Dilution:

WB: 1:1000-1:10000

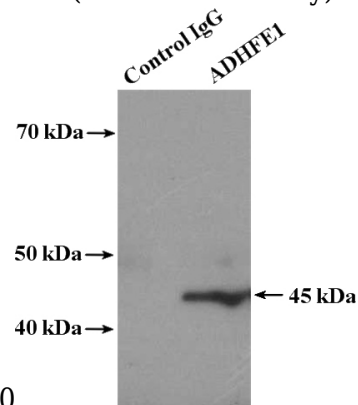
IP: 1:200-1:1000

IHC: 1:20-1:200

## Validations



mouse heart tissue were subjected to SDS PAGE followed by western blot with Catalog No:107792(ADHFE1 antibody) at dilution of

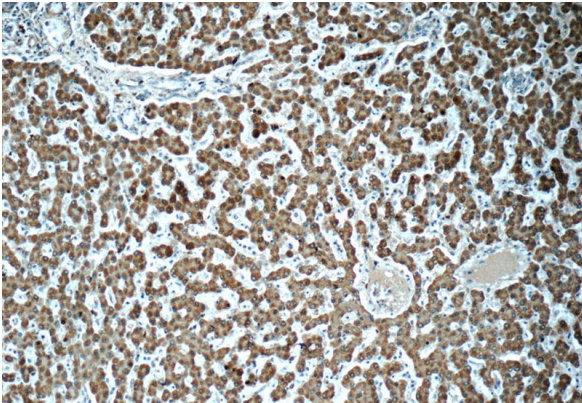


IP Result of anti-ADHFE1 (IP:Catalog No:107792, 4ug; Detection:Catalog No:107792 1:300) with mouse heart tissue lysate 4000ug.

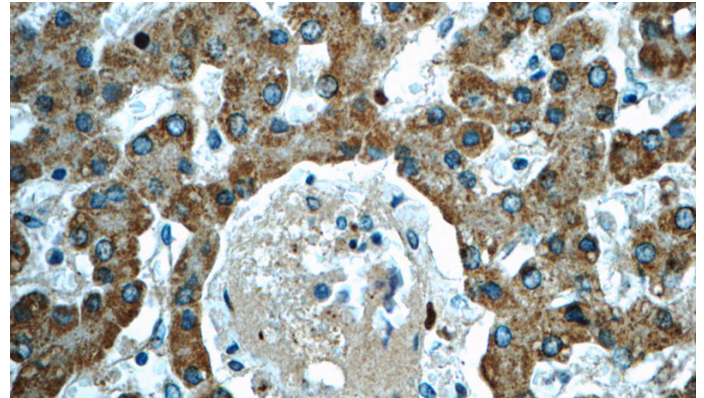
# ADHFE1 antibody

Catalog Number: 107792

---



Immunohistochemistry of paraffin-embedded human liver tissue slide using Catalog No:107792(ADHFE1 Antibody) at dilution of 1:50 (under 10x lens)



Immunohistochemistry of paraffin-embedded human liver tissue slide using Catalog No:107792(ADHFE1 Antibody) at dilution of 1:50 (under 40x lens)