

# ADHFE1 antibody



Catalog Number: 107791

## Product name

ADHFE1 antibody

## Specificity

Human, Mouse, Rat; other species not tested.

## Antibody description

ADHFE1 Rabbit Polyclonal antibody. Positive WB detected in rat kidney tissue, mouse heart tissue. Positive IHC detected in human liver tissue. Observed molecular weight by Western-blot: 50 kDa, 45 kDa

## Preparation

This antibody was obtained by immunization of ADHFE1 recombinant protein (Accession Number: BC064634). Purification method: Antigen affinity purified.

## Formulation

PBS with 0.02% sodium azide and 50% glycerol pH 7.3.

## Storage

Store at -20°C. DO NOT ALIQUOT

## Clonality

Polyclonal

## Ig Type

Rabbit IgG

## Applications

ELISA, IHC, WB

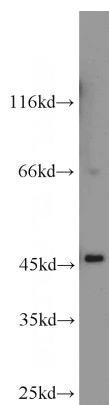
## Dilutions

Recommended Dilution:

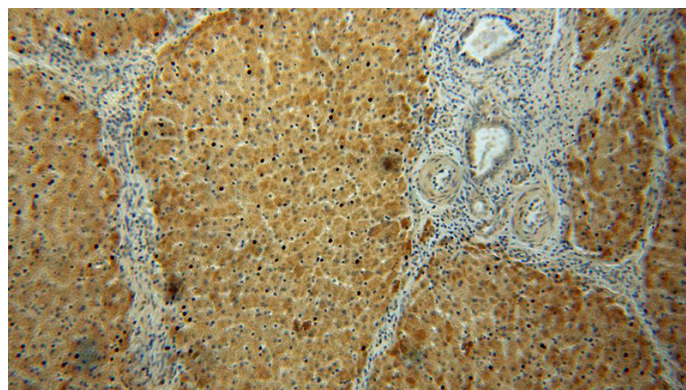
WB: 1:500-1:5000

IHC: 1:20-1:200

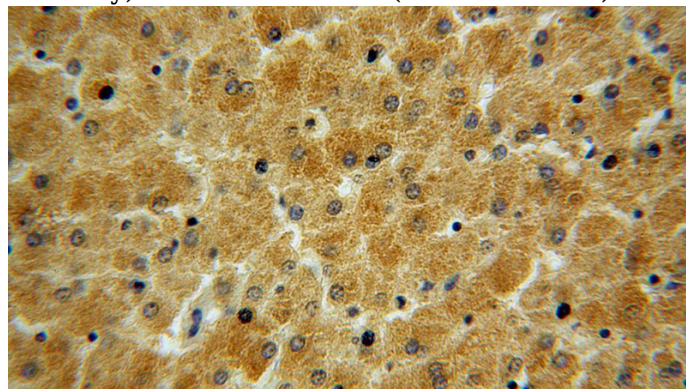
## Validations



rat kidney tissue were subjected to SDS PAGE followed by western blot with Catalog No:107791(ADHFE1 antibody) at dilution of 1:1000



Immunohistochemical of paraffin-embedded human liver using Catalog No:107791(ADHFE1 antibody) at dilution of 1:50 (under 10x lens)



Immunohistochemical of paraffin-embedded human liver using Catalog No:107791(ADHFE1 antibody) at dilution of 1:50 (under 40x lens)