

# Adenylosuccinate lyase antibody



Catalog Number: 107785

## Product name

Adenylosuccinate lyase antibody

IHC: 1:20-1:200

IF: 1:10-1:100

## Specificity

Human, Mouse, Rat; other species not tested.

## Antibody description

Adenylosuccinate lyase Rabbit Polyclonal antibody. Positive IF detected in HeLa cells. Positive IHC detected in human liver cancer tissue. Positive FC detected in HeLa cells. Positive WB detected in HeLa cells, HepG2 cells. Observed molecular weight by Western-blot: 55 kDa

## Preparation

This antibody was obtained by immunization of Adenylosuccinate lyase recombinant protein (Accession Number: NM\_000026). Purification method: Antigen affinity purified.

## Formulation

PBS with 0.02% sodium azide and 50% glycerol pH 7.3.

## Storage

Store at -20°C. DO NOT ALIQUOT

## Clonality

Polyclonal

## Ig Type

Rabbit IgG

## Applications

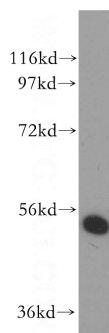
ELISA, WB, IHC, IF, FC

## Dilutions

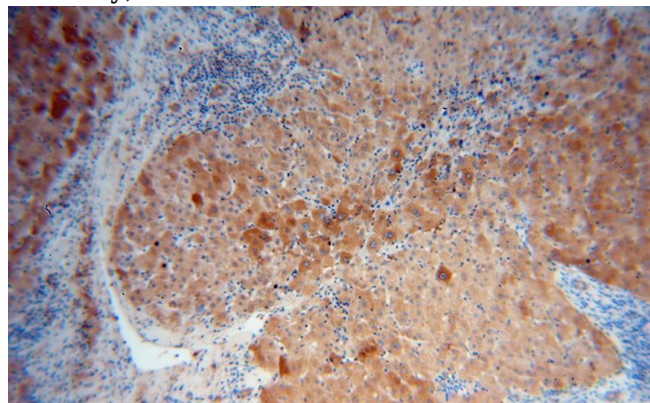
Recommended Dilution:

WB: 1:500-1:5000

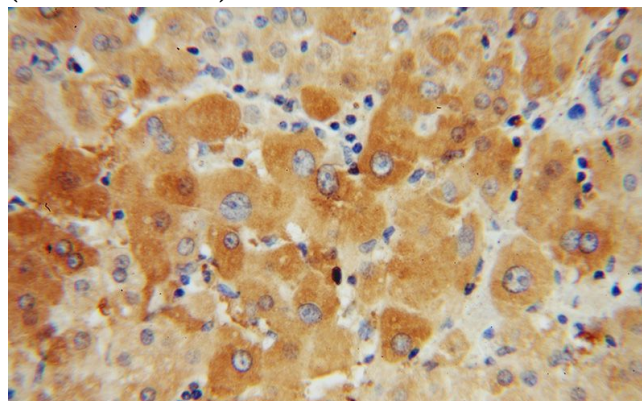
## Validations



HeLa cells were subjected to SDS PAGE followed by western blot with Catalog No:107785(ADSL antibody) at dilution of 1:400



Immunohistochemical of paraffin-embedded human liver cancer using Catalog No:107785(ADSL antibody) at dilution of 1:50 (under 10x lens)



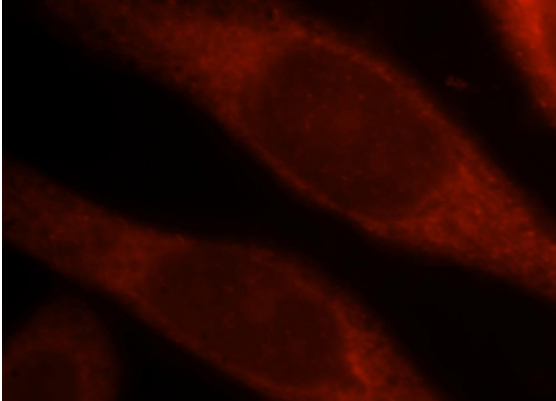
Immunohistochemical of paraffin-embedded

# Adenylosuccinate lyase antibody

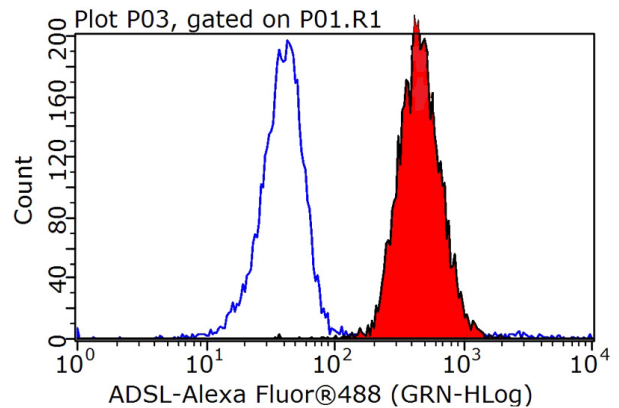


Catalog Number: 107785

human liver cancer using Catalog  
No:107785(ADSL antibody) at dilution of 1:50  
(under 40x lens)



Immunofluorescent analysis of HeLa cells, using  
ADSL antibody Catalog No:107785 at 1:25 dilution  
and Rhodamine-labeled goat anti-rabbit IgG (red).



1X10<sup>6</sup> HeLa cells were stained with 0.2ug ADSL antibody (Catalog No:107785, red) and control antibody (blue). Fixed with 90% MeOH blocked with 3% BSA (30 min). Alexa Fluor 488-conjugated AffiniPure Goat Anti-Rabbit IgG(H+L) with dilution 1:1000.