

ADAP1 antibody



Catalog Number: 107772

Product name

ADAP1 antibody

IHC: 1:20-1:200

IF: 1:20-1:200

Specificity

Human, Mouse, Rat; other species not tested.

Antibody description

ADAP1 Rabbit Polyclonal antibody. Positive IF detected in MCF-7 cells, Hela cells. Positive IHC detected in human gliomas tissue. Positive WB detected in human brain tissue. Observed molecular weight by Western-blot: 43kd

Preparation

This antibody was obtained by immunization of ADAP1 recombinant protein (Accession Number: NM_006869). Purification method: Antigen affinity purified.

Formulation

PBS with 0.02% sodium azide and 50% glycerol pH 7.3.

Storage

Store at -20°C. DO NOT ALIQUOT

Clonality

Polyclonal

Ig Type

Rabbit IgG

Applications

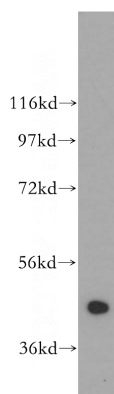
ELISA, WB, IHC, IF

Dilutions

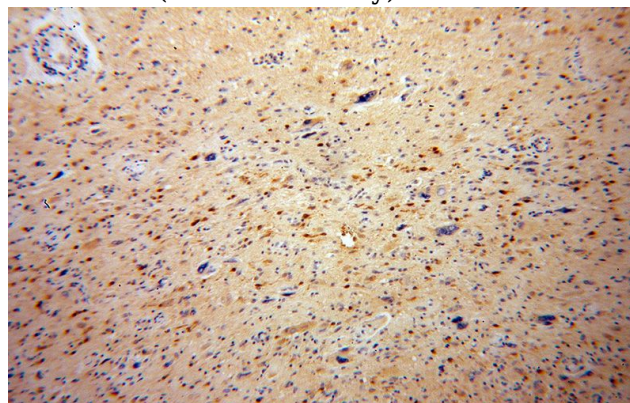
Recommended Dilution:

WB: 1:500-1:5000

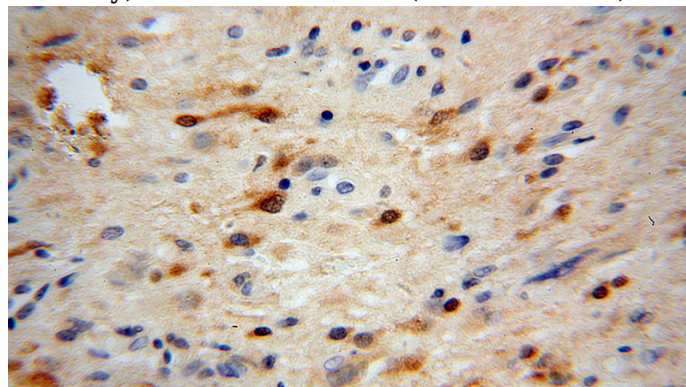
Validations



human brain tissue were subjected to SDS PAGE followed by western blot with Catalog No:107772(ADAP1 antibody) at dilution of 1:1000



Immunohistochemical of paraffin-embedded human gliomas using Catalog No:107772(ADAP1 antibody) at dilution of 1:100 (under 10x lens)



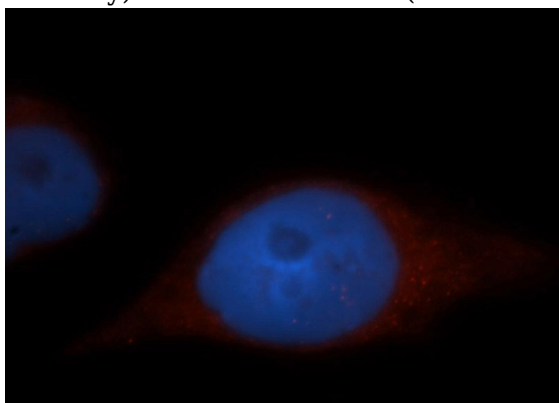
Immunohistochemical of paraffin-embedded human gliomas using Catalog No:107772(ADAP1 antibody) at dilution of 1:100 (under 10x lens)

ADAP1 antibody



Catalog Number: 107772

antibody) at dilution of 1:100 (under 40x lens)



Immunofluorescent analysis of MCF-7 cells, using ADAP1 antibody Catalog No:107772 at 1:50 dilution and Rhodamine-labeled goat anti-rabbit IgG (red). Blue pseudocolor = DAPI (fluorescent DNA dye).