

ADAM12 antibody



Catalog Number: 107761

Product name

ADAM12 antibody

Specificity

Human, Mouse; other species not tested.

Antibody description

ADAM12 Rabbit Polyclonal antibody. Positive IF detected in HepG2 cells. Positive IHC detected in human endometrial cancer tissue, human breast cancer tissue, human placenta tissue. Positive IP detected in HeLa cells. Positive WB detected in mouse brain tissue, HeLa cells, human placenta tissue, mouse colon tissue, mouse heart tissue, Y79 cells. Observed molecular weight by Western-blot: 97kd,68kd

Preparation

This antibody was obtained by immunization of ADAM12 recombinant protein (Accession Number: NM_001288974). Purification method: Antigen affinity purified.

Formulation

PBS with 0.02% sodium azide and 50% glycerol pH 7.3.

Storage

Store at -20°C. DO NOT ALIQUOT

Clonality

Polyclonal

Ig Type

Rabbit IgG

Applications

ELISA, WB, IHC, IF, IP

Dilutions

Recommended Dilution:

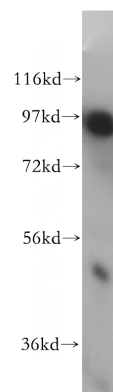
WB: 1:500-1:5000

IP: 1:200-1:1000

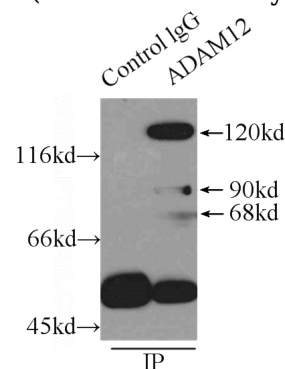
IHC: 1:20-1:200

IF: 1:10-1:100

Validations



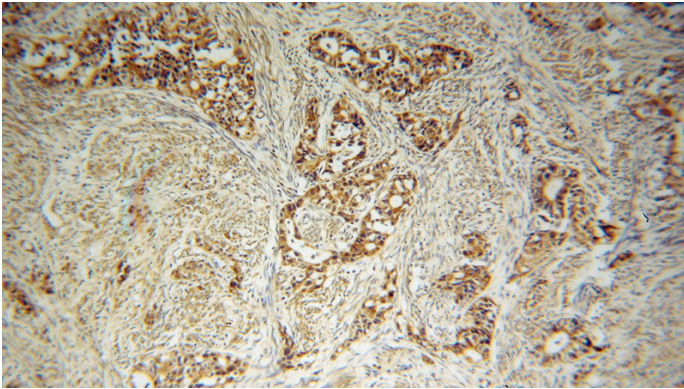
mouse brain tissue were subjected to SDS PAGE followed by western blot with Catalog No:107761(ADAM12 antibody) at dilution of 1:300



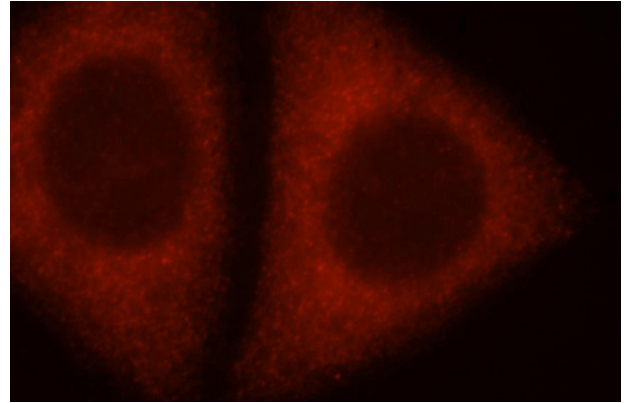
IP Result of anti-ADAM12 (IP:Catalog No:107761, 4ug; Detection:Catalog No:107761 1:300) with HeLa cells lysate 4650ug.

ADAM12 antibody

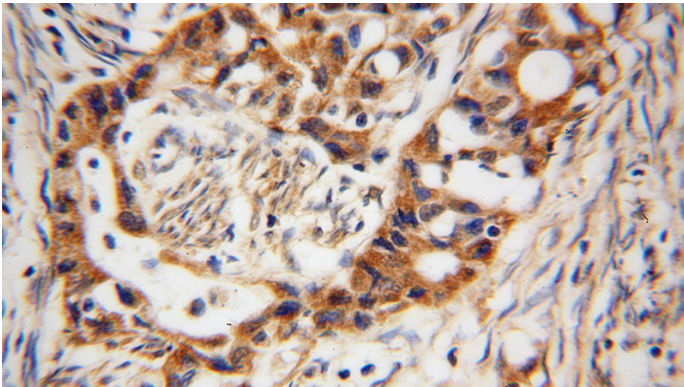
Catalog Number: 107761



Immunohistochemical of paraffin-embedded human endometrial cancer using Catalog No:107761(ADAM12 antibody) at dilution of 1:100 (under 40x lens)



Immunohistochemical of paraffin-embedded human endometrial cancer using Catalog No:107761(ADAM12 antibody) at dilution of 1:100 (under 10x lens)



Immunofluorescent analysis of HepG2 cells, using ADAM12 antibody Catalog No:107761 at 1:25 and Rhodamine-labeled goat anti-rabbit IgG (red).