

# ACAT1 antibody



Catalog Number: 107727

## Product name

ACAT1 antibody

IP: 1:200-1:2000

IHC: 1:20-1:200

## Specificity

Human, Mouse, Rat; other species not tested.

IF: 1:10-1:100

## Antibody description

ACAT1 Rabbit Polyclonal antibody. Positive WB detected in human skeletal muscle tissue, human heart tissue. Positive IP detected in mouse heart tissue. Positive IF detected in Hela cells. Positive IHC detected in human liver tissue. Observed molecular weight by Western-blot: 45kd

## Preparation

This antibody was obtained by immunization of ACAT1 recombinant protein (Accession Number: BC010942). Purification method: Antigen affinity purified.

## Formulation

PBS with 0.02% sodium azide and 50% glycerol pH 7.3.

## Storage

Store at -20°C. DO NOT ALIQUOT

## Clonality

Polyclonal

## Ig Type

Rabbit IgG

## Applications

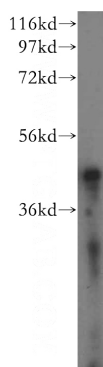
ELISA, WB, IHC, IF, IP

## Dilutions

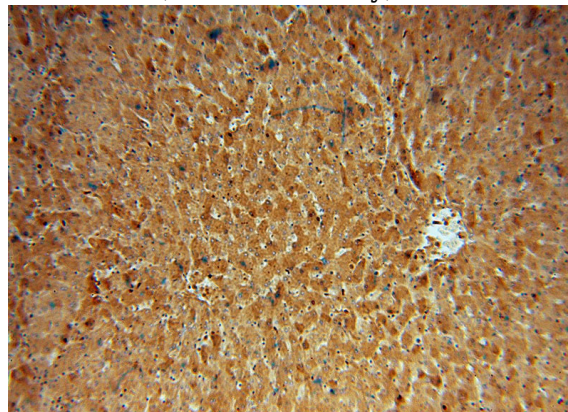
Recommended Dilution:

WB: 1:500-1:5000

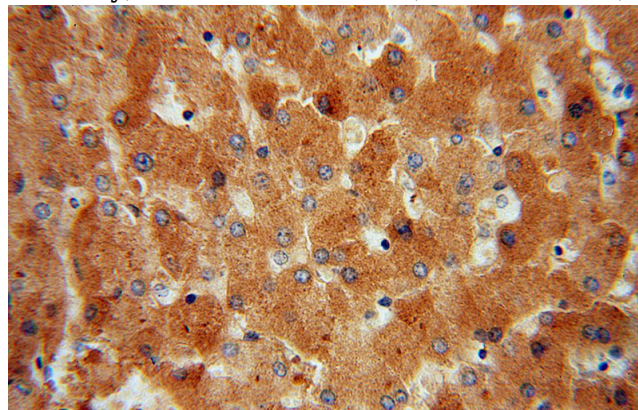
## Validations



human skeletal muscle tissue were subjected to SDS PAGE followed by western blot with Catalog No:107727(ACAT1 antibody) at dilution of 1:500



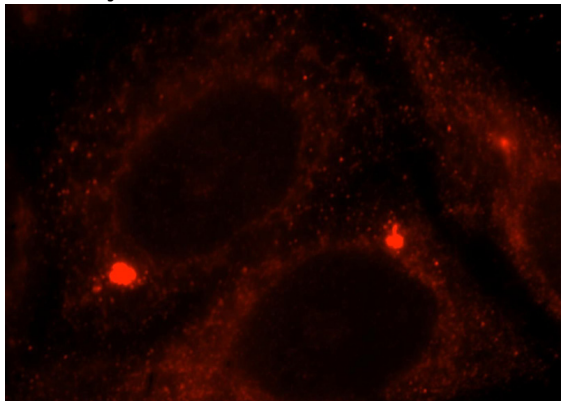
Immunohistochemical of paraffin-embedded human liver using Catalog No:107727(ACAT1 antibody) at dilution of 1:100 (under 10x lens)



# ACAT1 antibody

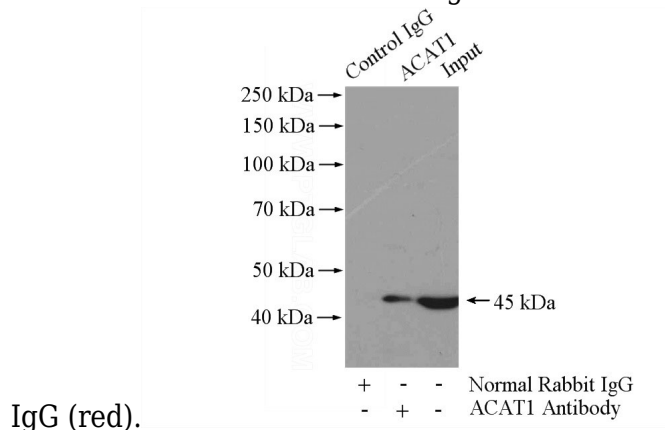
Catalog Number: 107727

Immunohistochemical of paraffin-embedded human liver using Catalog No:107727(ACAT1 antibody) at dilution of 1:100 (under 40x lens)



Immunofluorescent analysis of Hela cells, using ACAT1 antibody Catalog No:107727 at 1:25

dilution and Rhodamine-labeled goat anti-rabbit



IgG (red).

IP Result of anti-ACAT1 (IP:Catalog No:107727, 4ug; Detection:Catalog No:107727 1:500) with mouse heart tissue lysate 4400ug.