

ACSL1 antibody

Catalog Number: 107695

Product name

ACSL1 antibody

Immunogen

[Human ACSL1 Recombinant protein \(GST tag\)](#)

Specificity

Human, Mouse, Rat; other species not tested.

Antibody description

ACSL1 Rabbit Polyclonal antibody. Positive IP detected in mouse liver tissue. Positive WB detected in HepG2 cells, human cerebellum tissue, rat liver tissue. Positive IF detected in HepG2 cells. Positive IHC detected in human liver cancer tissue, human heart tissue. Observed molecular weight by Western-blot: 68 kDa, 78 kDa

Preparation

This antibody was obtained by immunization of ACSL1 recombinant protein (Accession Number: XM_005262829). Purification method: Antigen affinity purified.

Formulation

PBS with 0.02% sodium azide and 50% glycerol pH 7.3.

Storage

Store at -20°C. DO NOT ALIQUOT

Clonality

Polyclonal

Ig Type

Rabbit IgG

Applications

ELISA, WB, IHC, IP, IF

Dilutions

Recommended Dilution:

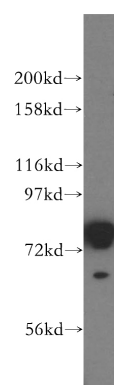
WB: 1:200-1:2000

IP: 1:200-1:2000

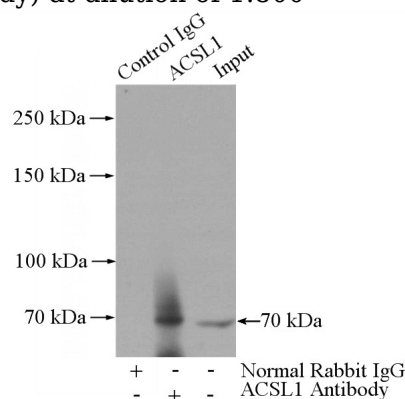
IHC: 1:20-1:200

IF: 1:20-1:200

Validations



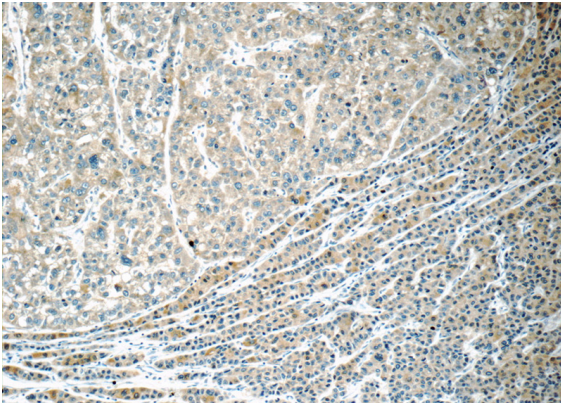
HepG2 cells were subjected to SDS PAGE followed by western blot with Catalog No:107695(ACSL1 antibody) at dilution of 1:800



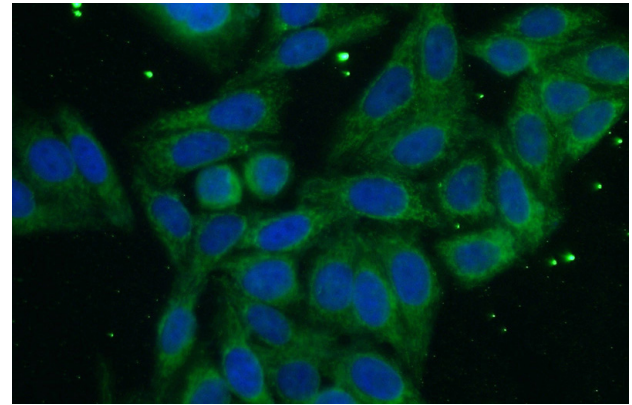
IP Result of anti-ACSL1 (IP:Catalog No:107695, 4ug; Detection:Catalog No:107695 1:600) with mouse liver tissue lysate 4000ug.

ACSL1 antibody

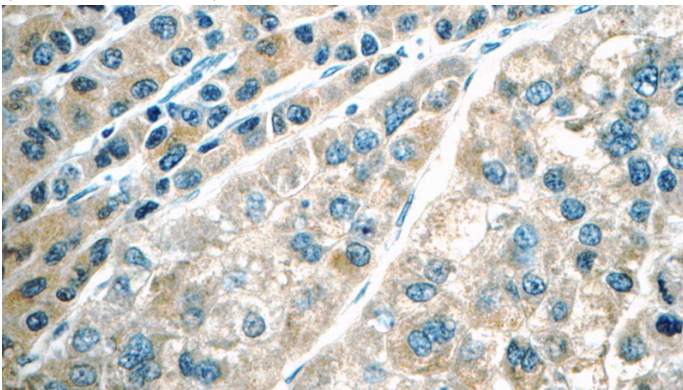
Catalog Number: 107695



Immunohistochemistry of paraffin-embedded human liver cancer tissue slide using Catalog No:107695(ACSL1 Antibody) at dilution of 1:50 (under 40x lens)



Immunohistochemistry of paraffin-embedded human liver cancer tissue slide using Catalog No:107695(ACSL1 Antibody) at dilution of 1:50 (under 10x lens)



Immunofluorescent analysis of (10% Formaldehyde) fixed HepG2 cells using Catalog No:107695(ACSL1 Antibody) at dilution of 1:50 and Alexa Fluor 488-conjugated AffiniPure Goat Anti-Rabbit IgG(H+L)