

ACP6 antibody

Catalog Number: 107691

Product name

ACP6 antibody

Specificity

Human, Mouse; other species not tested.

Antibody description

ACP6 Rabbit Polyclonal antibody. Positive WB detected in human liver tissue, mouse liver tissue. Positive IHC detected in human prostate cancer tissue. Observed molecular weight by Western-blot: 49kd

Preparation

This antibody was obtained by immunization of ACP6 recombinant protein (Accession Number: NM_016361). Purification method: Antigen affinity purified.

Formulation

PBS with 0.1% sodium azide and 50% glycerol pH 7.3.

Storage

Store at -20°C. DO NOT ALIQUOT

Clonality

Polyclonal

Ig Type

Rabbit IgG

Applications

ELISA, WB, IHC

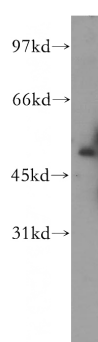
Dilutions

Recommended Dilution:

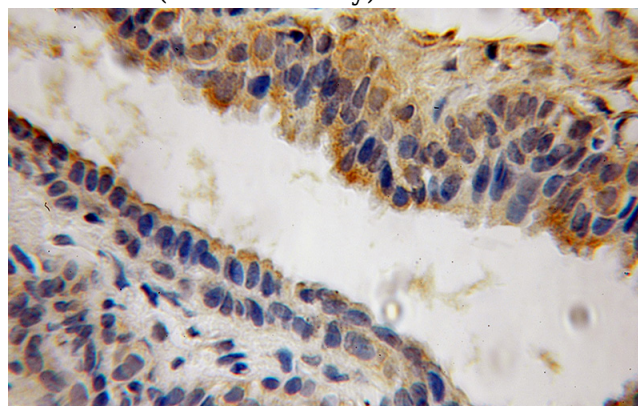
WB: 1:200-1:2000

IHC: 1:20-1:200

Validations



human liver tissue were subjected to SDS PAGE followed by western blot with Catalog No:107691(ACP6 antibody) at dilution of 1:300



Immunohistochemical of paraffin-embedded human prostate cancer using Catalog No:107691(ACP6 antibody) at dilution of 1:100 (under 10x lens)