

# ABAT antibody



Catalog Number: 107679

## Product name

ABAT antibody

IP: 1:200-1:2000

IHC: 1:20-1:200

## Specificity

Human, Mouse, Rat; other species not tested.

## Antibody description

ABAT Rabbit Polyclonal antibody. Positive IHC detected in human pancreas cancer tissue. Positive IP detected in mouse liver tissue. Positive WB detected in human liver tissue, human pancreas tissue. Observed molecular weight by Western-blot: 50 kDa

## Preparation

This antibody was obtained by immunization of ABAT recombinant protein (Accession Number: NM\_001386602). Purification method: Antigen affinity purified.

## Formulation

PBS with 0.1% sodium azide and 50% glycerol pH 7.3.

## Storage

Store at -20°C. DO NOT ALIQUOT

## Clonality

Polyclonal

## Ig Type

Rabbit IgG

## Applications

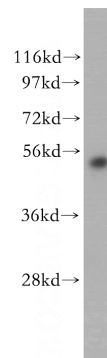
ELISA, WB, IHC, IP

## Dilutions

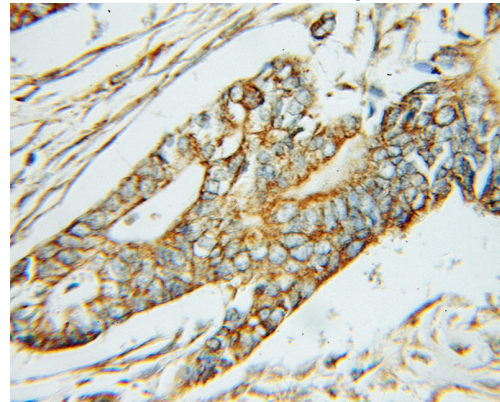
Recommended Dilution:

WB: 1:200-1:2000

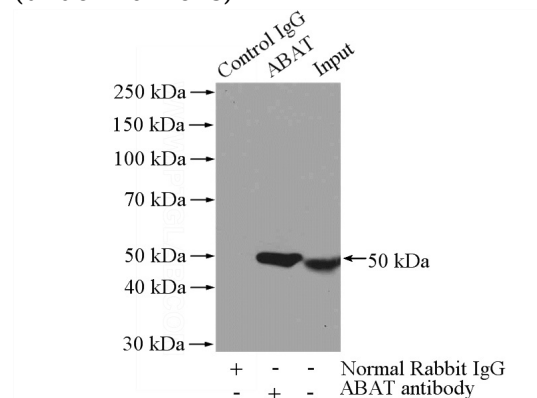
## Validations



human liver tissue were subjected to SDS PAGE followed by western blot with Catalog No:107679(ABAT antibody) at dilution of 1:300



Immunohistochemical of paraffin-embedded human pancreas cancer using Catalog No:107679(ABAT antibody) at dilution of 1:50 (under 10x lens)



IP Result of anti-ABAT (IP:Catalog No:107679,

# ABAT antibody



Catalog Number: 107679

---

4ug; Detection:Catalog No:107679 1:500) with mouse liver tissue lysate 4000ug.