

# A1BG antibody

Catalog Number: 107664

## Product name

A1BG antibody

IHC: 1:20-1:200

IF: 1:10-1:100

## Specificity

Human, Mouse; other species not tested.

## Antibody description

A1BG Rabbit Polyclonal antibody. Positive WB detected in human plasma tissue, BxPC-3 cells, MCF7 cells, mouse kidney tissue. Positive IF detected in HepG2 cells. Positive IHC detected in human hepat°Cirrhosis tissue. Observed molecular weight by Western-blot: 65 kDa

## Preparation

This antibody was obtained by immunization of A1BG recombinant protein (Accession Number: BC035719). Purification method: Antigen affinity purified.

## Formulation

PBS with 0.02% sodium azide and 50% glycerol pH 7.3.

## Storage

Store at -20°C. DO NOT ALIQUOT

## Clonality

Polyclonal

## Ig Type

Rabbit IgG

## Applications

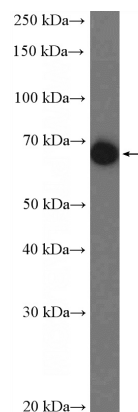
ELISA, IHC, IF, WB

## Dilutions

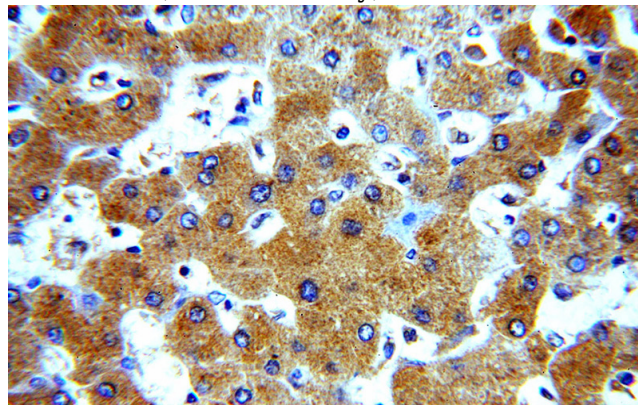
Recommended Dilution:

WB: 1:2000-1:20000

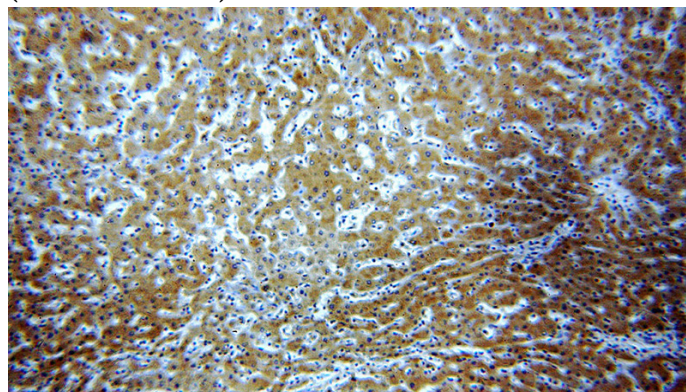
## Validations



human plasma tissue were subjected to SDS PAGE followed by western blot with Catalog No:107664(A1BG Antibody) at dilution of 1:5000



Immunohistochemical of paraffin-embedded human hepatocirrhosis using Catalog No:107664(A1BG antibody) at dilution of 1:50 (under 40x lens)



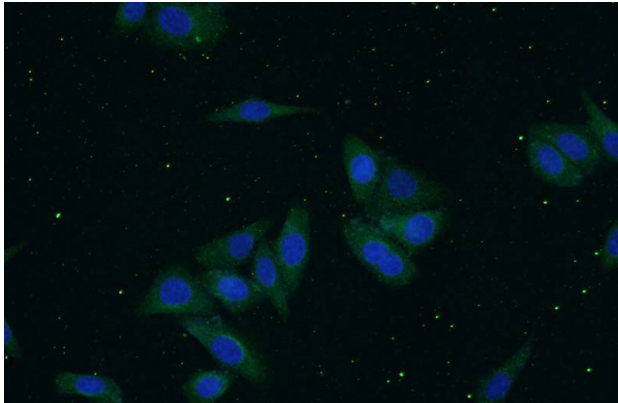
Immunohistochemical of paraffin-embedded

# A1BG antibody

Catalog Number: 107664

---

human hepatocirrhosis using Catalog No:107664(A1BG antibody) at dilution of 1:50 (under 10x lens)



Immunofluorescent analysis of HepG2 cells using Catalog No:107664(A1BG Antibody) at dilution of 1:25 and Alexa Fluor 488-conjugated AffiniPure Goat Anti-Rabbit IgG(H+L)