

# TTF1 antibody

Catalog Number: 107649

## Product name

TTF1 antibody

## Specificity

Human; other species not tested.

## Antibody description

TTF1 Mouse Monoclonal antibody. Positive IHC detected in human lung cancer tissue, human liver cancer tissue. Positive WB detected in HeLa cells. Observed molecular weight by Western-blot: 41 kDa

## Preparation

This antibody was obtained by immunization of Peptide (Accession Number: NM\_003317). Purification method: Protein A purified.

## Formulation

PBS with 0.02% sodium azide and 50% glycerol pH 7.3.

## Storage

Store at -20°C. DO NOT ALIQUOT

## Clonality

Monoclonal

## Ig Type

IgG3

## Applications

ELISA, WB, IHC

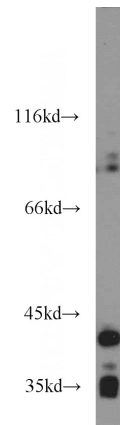
## Dilutions

Recommended Dilution:

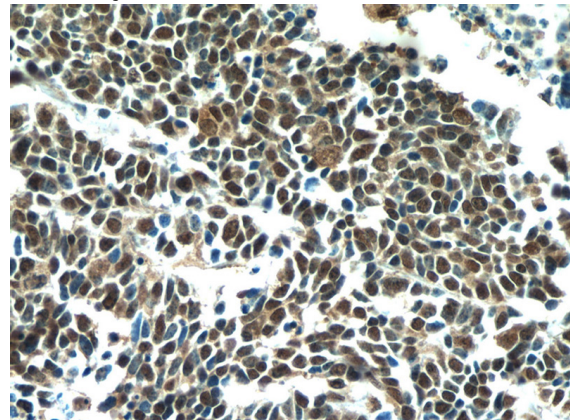
WB: 1:500-1:5000

IHC: 1:20-1:200

## Validations



HeLa cells were subjected to SDS PAGE followed by western blot with Catalog No:107649(NKX2-1 antibody) at dilution of 1:1000



Immunohistochemical of paraffin-embedded human lung cancer using Catalog No:107649(NKX2-1 antibody) at dilution of 1:50 (under 40x lens)