

STOML2 antibody



Catalog Number: 107610

Product name

STOML2 antibody

Recommended Dilution:

WB: 1:500-1:5000

Immunogen

[Human STOML2 Recombinant protein \(GST tag\)](#)

IP: 1:500-1:5000

IHC: 1:20-1:200

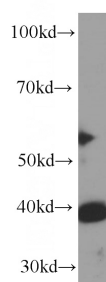
Specificity

Human, Mouse; other species not tested.

Validations

Antibody description

STOML2 Mouse Monoclonal antibody. Positive IHC detected in human endometrial cancer tissue, human lung cancer tissue. Positive WB detected in HepG2 cells, human heart tissue. Positive IP detected in mouse brain tissue. Observed molecular weight by Western-blot: 39kd



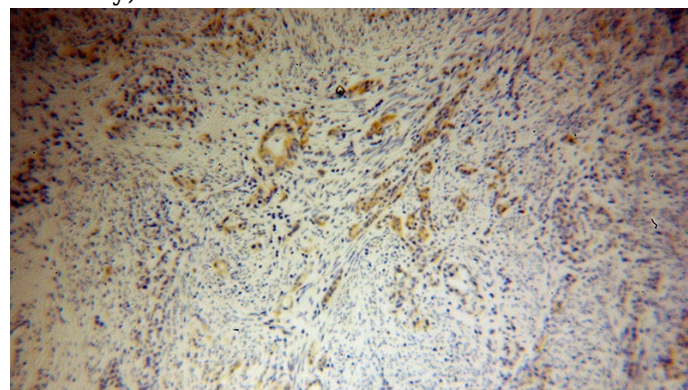
Preparation

This antibody was obtained by immunization of STOML2 recombinant protein (Accession Number: NM_013442). Purification method: Caprylic acid/ammonium sulfate precipitation.

HepG2 cells were subjected to SDS PAGE followed by western blot with Catalog No:107610(STOML2 antibody) at dilution of 1:1000

Formulation

PBS with 0.1% sodium azide and 50% glycerol pH 7.3.



Storage

Store at -20°C. DO NOT ALIQUOT

Clonality

Monoclonal

Immunohistochemical of paraffin-embedded human endometrial cancer using Catalog No:107610(STOML2 antibody) at dilution of 1:100 (under 10x lens)

Ig Type

Mouse IgG2b

Applications

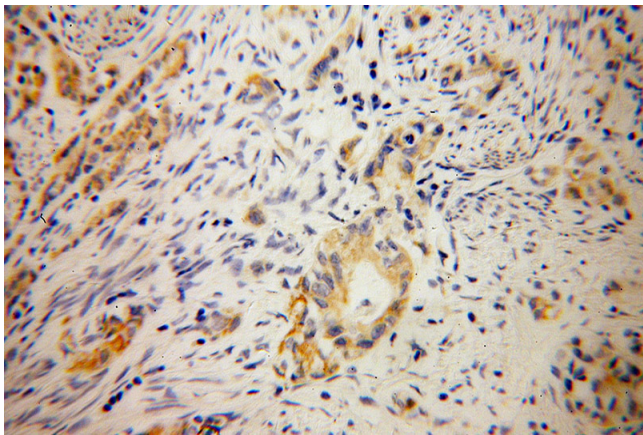
ELISA, WB, IHC, IP

Dilutions

STOML2 antibody

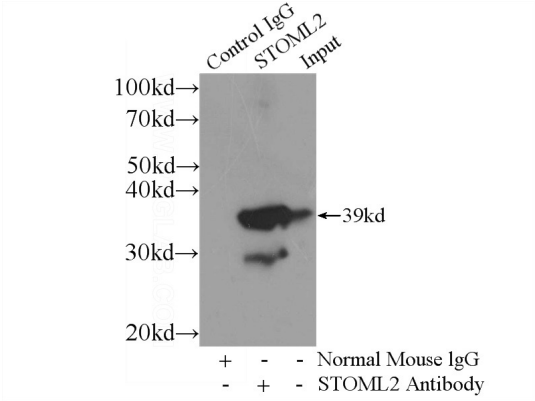


Catalog Number: 107610



Immunohistochemical of paraffin-embedded human endometrial cancer using Catalog No:107610(STOML2 antibody) at dilution of 1:100

(under 40x lens)



IP Result of anti-STOML2 (IP:Catalog No:107610, 4ug; Detection:Catalog No:107610 1:1000) with mouse brain tissue lysate 4000ug.