

SMMHC antibody



Catalog Number: 107592

Product name

SMMHC antibody

Specificity

Human; other species not tested.

Antibody description

SMMHC Mouse Monoclonal antibody. Positive WB detected in HeLa cells. Observed molecular weight by Western-blot: 220-230 kDa

Preparation

This antibody was obtained by immunization of SMMHC recombinant protein (Accession Number: NM_022844). Purification method: Protein G purified.

Formulation

PBS with 0.02% sodium azide and 50% glycerol pH 7.3.

Storage

Store at -20°C. DO NOT ALIQUOT

Clonality

Monoclonal

Ig Type

Mouse IgG1

Applications

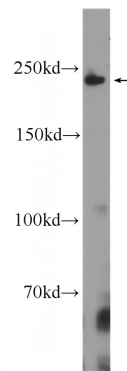
ELISA, WB

Dilutions

Recommended Dilution:

WB: 1:500-1:5000

Validations



HeLa cells were subjected to SDS PAGE followed by western blot with Catalog No:107592(MYH11 Antibody) at dilution of 1:1000