

Vinculin antibody



Catalog Number: 107541

Product name

Vinculin antibody

WB: 1:2000-1:20000

IHC: 1:50-1:500

Specificity

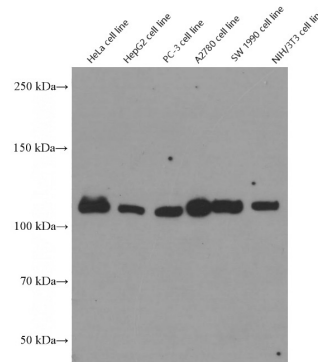
Human, Mouse, Rat, Pig; other species not tested.

IF: 1:50-1:500

Antibody description

Vinculin Mouse Monoclonal antibody. Positive WB detected in HeLa cells, pig heart tissue, rat heart tissue. Positive IHC detected in human breast cancer tissue, human prostate cancer tissue. Positive IF detected in HeLa cells. Positive FC detected in HeLa cells. Observed molecular weight by Western-blot: 117 kDa

Validations



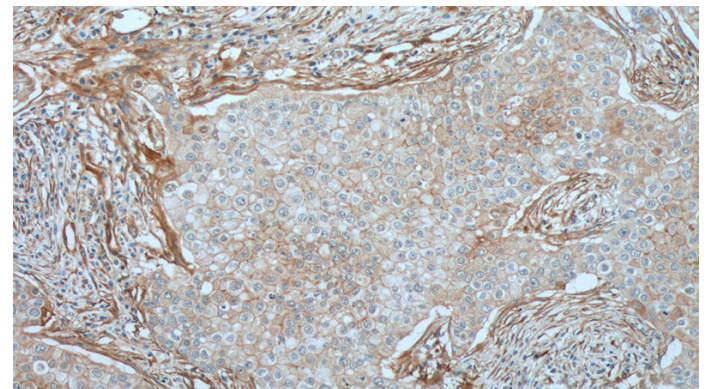
Preparation

This antibody was obtained by immunization of Vinculin recombinant protein (Accession Number: NM_003373). Purification method: Protein G purified.

Various cells were subjected to SDS PAGE followed by western blot with Catalog No:117346(Vinculin Antibody) at dilution of 1:5000

Formulation

PBS with 0.02% sodium azide and 50% glycerol pH 7.3.



Storage

Store at -20°C. DO NOT ALIQUOT

Clonality

Monoclonal

Ig Type

Mouse IgG1

Immunohistochemistry of paraffin-embedded human breast cancer tissue slide using Catalog No:117346(Vinculin Antibody) at dilution of 1:200 (under 10x lens). heat mediated antigen retrieved with Tris-EDTA buffer(pH9).

Applications

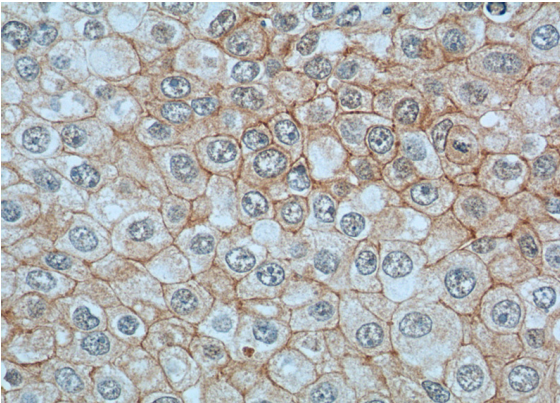
ELISA, WB, IF, IHC, FC

Dilutions

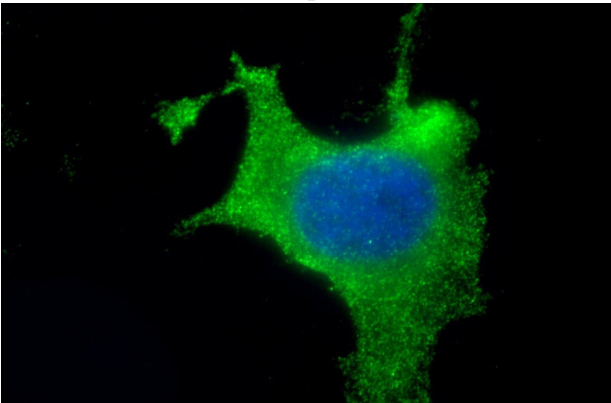
Recommended Dilution:

Vinculin antibody

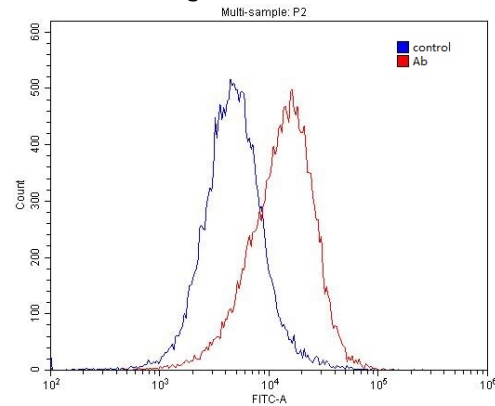
Catalog Number: 107541



Immunohistochemistry of paraffin-embedded human breast cancer tissue slide using Catalog No:117346(Vinculin Antibody) at dilution of 1:200 (under 40x lens). heat mediated antigen retrieved with Tris-EDTA buffer(pH9).



Immunofluorescent analysis of (10% Formaldehyde) fixed HeLa cells using Catalog No:117346(Vinculin Antibody) at dilution of 1:200 and Alexa Fluor 488-conjugated AffiniPure Goat Anti-Mouse IgG(H+L)



1X10⁶ HeLa cells were stained with 0.2ug Vinculin antibody (Catalog No:117346, red) and control antibody (blue). Fixed with 4% PFA blocked with 3% BSA (30 min). Alexa Fluor 488-conjugated AffiniPure Goat Anti-Mouse IgG(H+L) with dilution 1:1500.