

# RRM1 antibody

Catalog Number: 107512

## Product name

RRM1 antibody

WB: 1:500-1:5000

IP: 1:500-1:5000

## Specificity

Human; other species not tested.

IHC: 1:20-1:200

IF: 1:20-1:200

## Antibody description

RRM1 Mouse Monoclonal antibody. Positive WB detected in K-562 cells. Positive IP detected in K-562 cells. Positive IF detected in HepG2 cells, HeLa cells. Positive IHC detected in human lung cancer tissue, human breast cancer tissue, human cervical cancer tissue. Observed molecular weight by Western-blot: 90 kDa

## Validations



## Preparation

This antibody was obtained by immunization of RRM1 recombinant protein (Accession Number: NM\_001033). Purification method: Protein A purified.

K-562 cells were subjected to SDS PAGE followed by western blot with Catalog No:107512(RRM1 antibody) at dilution of 1:1000

## Formulation

PBS with 0.1% sodium azide and 50% glycerol pH 7.3.

## Storage

Store at -20°C. DO NOT ALIQUOT

## Clonality

Monoclonal

## Ig Type

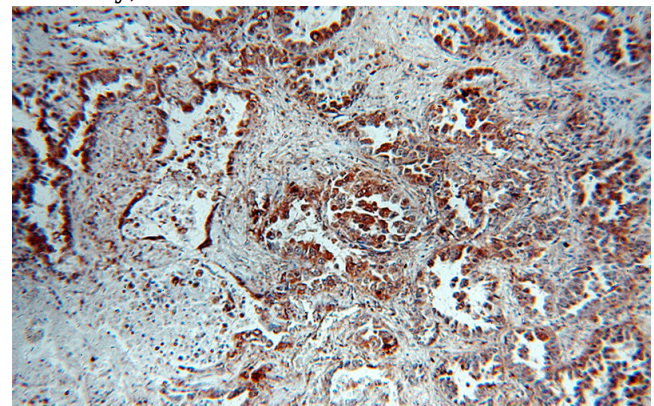
Mouse IgG2b

## Applications

ELISA, WB, IHC, IF, IP

## Dilutions

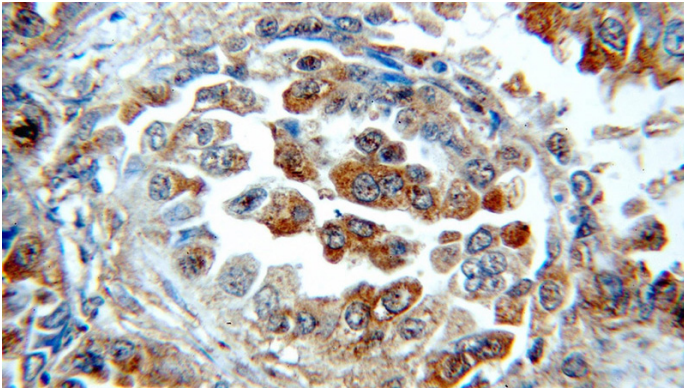
Recommended Dilution:



Immunohistochemical of paraffin-embedded human lung cancer using Catalog No:107512(RRM1 antibody) at dilution of 1:100 (under 10x lens)

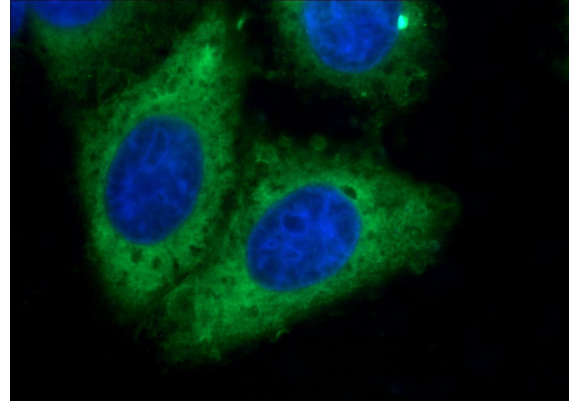
# RRM1 antibody

Catalog Number: 107512



Immunohistochemical of paraffin-embedded human lung cancer using Catalog No:107512(RRM1 antibody) at dilution of 1:100 (under 40x lens)

IP Result of anti-RRM1 (IP:Catalog No:107512, 5ug; Detection:Catalog No:107512 1:1000) with K-562 cells lysate 3440ug.



Immunofluorescent analysis of HepG2 cells using Catalog No:107512(RRM1 Antibody) at dilution of 1:50 and Alexa Fluor 488-conjugated AffiniPure Goat Anti-Mouse IgG(H+L)

