

RRM1 antibody

Catalog Number: 107511

Product name

RRM1 antibody

WB: 1:200-1:2000

IP: 1:500-1:5000

Specificity

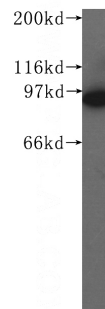
Human, Mouse; other species not tested.

IHC: 1:20-1:200

Antibody description

RRM1 Mouse Monoclonal antibody. Positive FC detected in HepG2 cells. Positive IHC detected in human lung cancer tissue, human breast cancer tissue, human cervical cancer tissue, human ovary tumor tissue. Positive IP detected in K-562 cells. Positive WB detected in K-562 cells. Observed molecular weight by Western-blot: 90 kDa

Validations



Preparation

This antibody was obtained by immunization of RRM1 recombinant protein (Accession Number: NM_001033). Purification method: Caprylic acid/ammonium sulfate precipitation.

K-562 cells were subjected to SDS PAGE followed by western blot with Catalog No:107511(RRM1 antibody) at dilution of 1:500

Formulation

PBS with 0.1% sodium azide and 50% glycerol pH 7.3.

Storage

Store at -20°C. DO NOT ALIQUOT

Clonality

Monoclonal

Ig Type

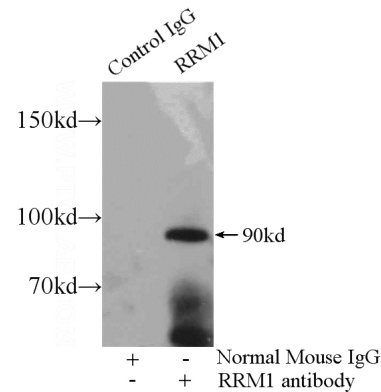
Mouse IgG1

Applications

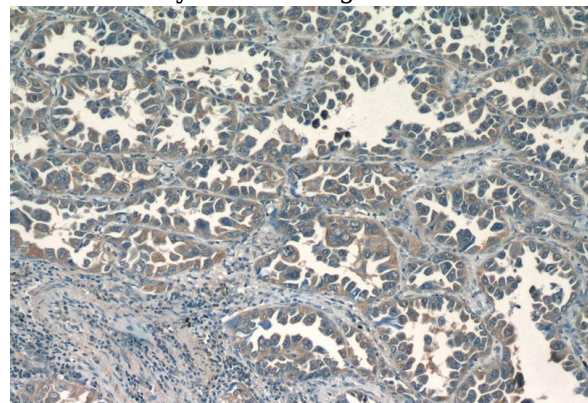
ELISA, FC, IP, WB, IHC

Dilutions

Recommended Dilution:



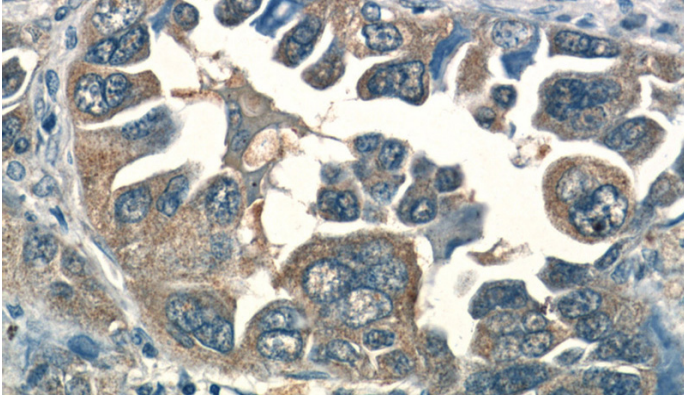
IP Result of anti-RRM1 (IP:Catalog No:107511, 5ug; Detection:Catalog No:107511 1:1000) with K-562 cells lysate 3200ug.



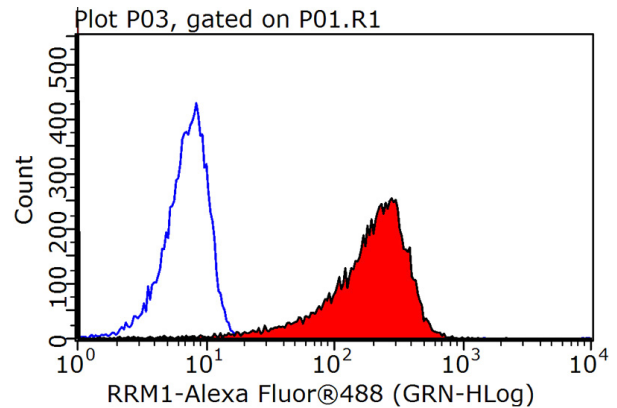
RRM1 antibody

Catalog Number: 107511

Immunohistochemistry of paraffin-embedded human lung cancer tissue slide using Catalog No:107511(RRM1 Antibody) at dilution of 1:50



Immunohistochemistry of paraffin-embedded human lung cancer tissue slide using Catalog No:107511(RRM1 Antibody) at dilution of 1:50



1X10⁶ HepG2 cells were stained with .2ug RRM1 antibody (Catalog No:107511, red) and control antibody (blue). Fixed with 90% MeOH blocked with 3% BSA (30 min). Alexa Fluor 488-conjugated AffiniPure Goat Anti-Mouse IgG(H+L) with dilution 1:1000.