

# RBM15 antibody



Catalog Number: 107500

## Product name

RBM15 antibody

IP: 1:200-1:2000

IF: 1:10-1:100

## Specificity

Human; other species not tested.

## Antibody description

RBM15 Mouse Monoclonal antibody. Positive IF detected in Hela cells. Positive WB detected in Hela cells, HEK-293 cells, human brain tissue, human heart tissue. Positive IP detected in HEK-293 cells. Observed molecular weight by Western-blot: 107kD

## Preparation

This antibody was obtained by immunization of RBM15 recombinant protein (Accession Number: BC006397). Purification method: Protein A purified.

## Formulation

PBS with 0.02% sodium azide and 50% glycerol pH 7.3.

## Storage

Store at -20°C. DO NOT ALIQUOT

## Clonality

Monoclonal

## Ig Type

Mouse IgG2a

## Applications

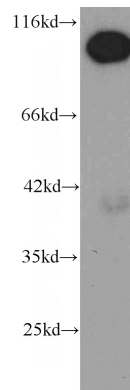
ELISA, WB, IF, IP

## Dilutions

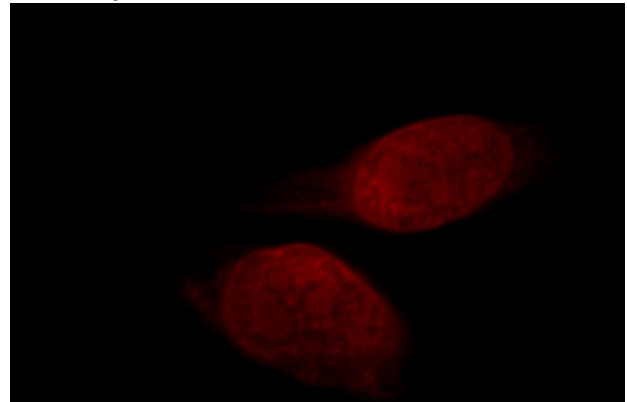
Recommended Dilution:

WB: 1:500-1:5000

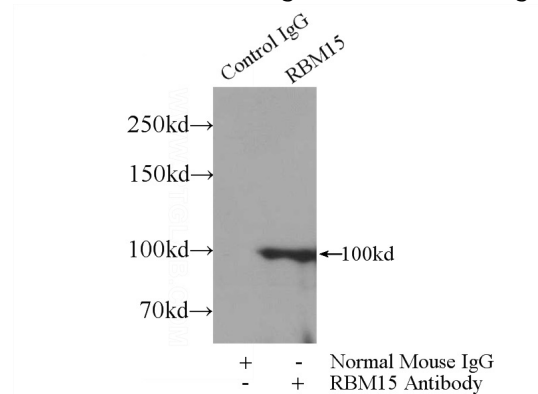
## Validations



HeLa cells were subjected to SDS PAGE followed by western blot with Catalog No:107500(RBM15 antibody) at dilution of 1:1000



Immunofluorescent analysis of HeLa cells, using RBM15 antibody Catalog No: at 1:25 dilution and Rhodamine-labeled goat anti-mouse IgG (red).



IP Result of anti-RBM15 (IP:Catalog No:107500, 3ug; Detection:Catalog No:107500 1:500) with

# RBM15 antibody



Catalog Number: 107500

---

HEK-293 cells lysate 1800ug.