

# MTA2 antibody

Catalog Number: 107432

## Product name

MTA2 antibody

## Specificity

Human; other species not tested.

## Antibody description

MTA2 Mouse Monoclonal antibody. Positive WB detected in HeLa cells, HEK-293 cells. Positive IF detected in HepG2 cells. Positive FC detected in HepG2 cells. Observed molecular weight by Western-blot: 75 kDa

## Preparation

This antibody was obtained by immunization of MTA2 recombinant protein (Accession Number: NM\_004739). Purification method: Protein A purified.

## Formulation

PBS with 0.02% sodium azide and 50% glycerol pH 7.3.

## Storage

Store at -20°C. DO NOT ALIQUOT

## Clonality

Monoclonal

## Ig Type

Mouse IgG2b

## Applications

ELISA, WB, IF, FC

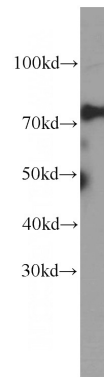
## Dilutions

Recommended Dilution:

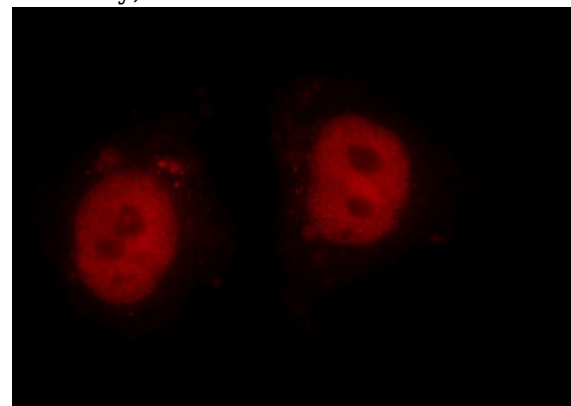
WB: 1:500-1:5000

IF: 1:20-1:200

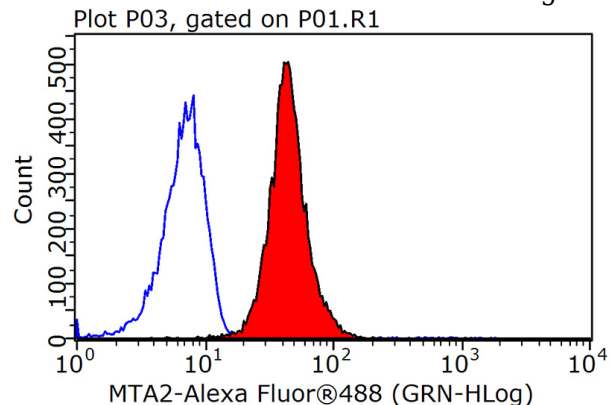
## Validations



HeLa cells were subjected to SDS PAGE followed by western blot with Catalog No:107432(MTA2 Antibody) at dilution of 1:1000



Immunofluorescent analysis of HepG2 cells using Catalog No:107432(MTA2 Antibody) at dilution of 1:50 and Rhodamine-Goat anti-Mouse IgG



1X10<sup>6</sup> HepG2 cells were stained with .2ug MTA2 antibody (Catalog No:107432, red) and control antibody (blue). Fixed with 90% MeOH blocked

# MTA2 antibody



Catalog Number: 107432

---

with 3% BSA (30 min). Alexa Fluor 488-

conjugated AffiniPure Goat Anti-Mouse IgG(H+L)  
with dilution 1:1000.