

MSH6 antibody



Catalog Number: 107431

Product name

MSH6 antibody

IP: 1:200-1:2000

IHC: 1:50-1:500

Specificity

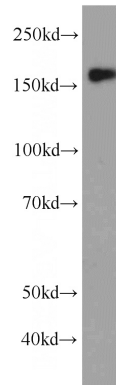
Human; other species not tested.

IF: 1:50-1:500

Antibody description

MSH6 Mouse Monoclonal antibody. Positive IP detected in HEK-293 cells. Positive WB detected in HEK-293 cells, HepG2 cells. Positive IF detected in HepG2 cells. Positive IHC detected in human colon cancer tissue. Observed molecular weight by Western-blot: 160 kDa

Validations



Preparation

This antibody was obtained by immunization of MSH6 recombinant protein (Accession Number: NM_000179). Purification method: Protein A purified.

HEK-293 cells were subjected to SDS PAGE followed by western blot with Catalog No:107431(MSH6 Antibody) at dilution of 1:1000

Formulation

PBS with 0.02% sodium azide and 50% glycerol pH 7.3.

Storage

Store at -20°C. DO NOT ALIQUOT

Clonality

Monoclonal

Ig Type

Mouse IgG2a

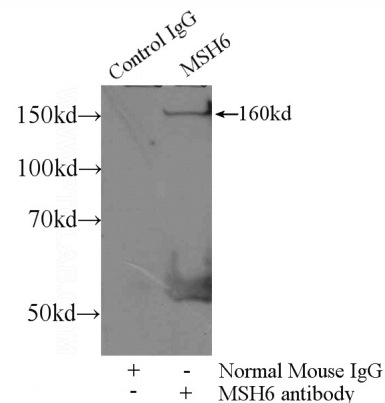
Applications

ELISA, WB, IP, IF, IHC

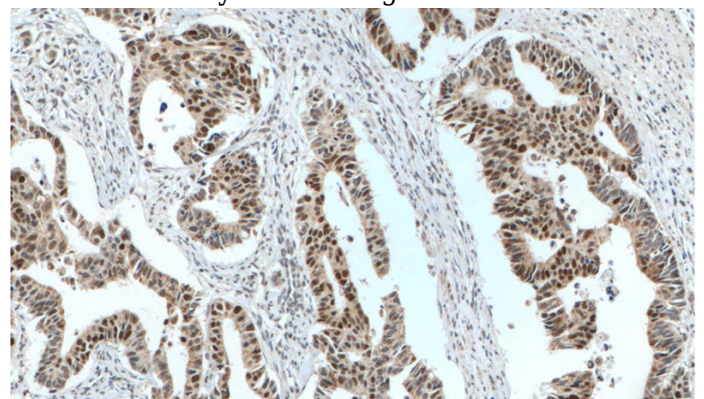
Dilutions

Recommended Dilution:

WB: 1:500-1:5000



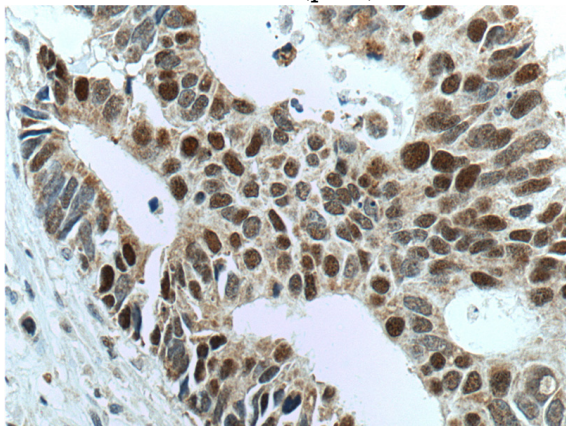
IP Result of anti-MSH6 (IP:Catalog No:107431, 4ug; Detection:Catalog No:107431 1:600) with HEK-293 cells lysate 1800ug.



MSH6 antibody

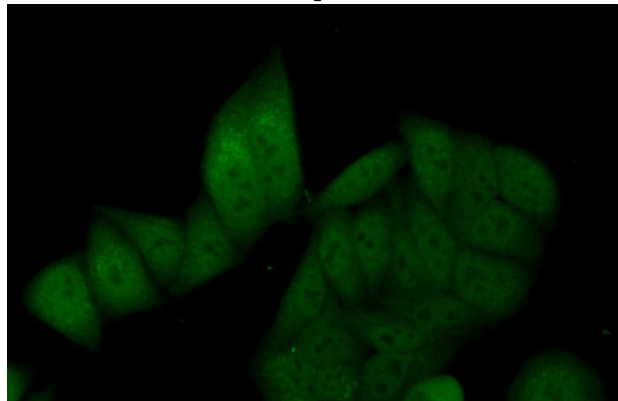
Catalog Number: 107431

Immunohistochemistry of paraffin-embedded human colon cancer tissue slide using Catalog No:107431(MSH6 Antibody) at dilution of 1:800 (under 10x lens). heat mediated antigen retrieved with Tris-EDTA buffer(pH9).



Immunohistochemistry of paraffin-embedded human colon cancer tissue slide using Catalog

No:107431(MSH6 Antibody) at dilution of 1:800 (under 40x lens). heat mediated antigen retrieved with Tris-EDTA buffer(pH9).



Immunofluorescent analysis of (10% Formaldehyde) fixed HepG2 cells using Catalog No:107431(MSH6 Antibody) at dilution of 1:50 and Alexa Fluor 488-conjugated AffiniPure Goat Anti-Mouse IgG(H+L)