

Melanophilin antibody



Catalog Number: 107422

Product name

Melanophilin antibody

IHC: 1:20-1:200

IF: 1:10-1:100

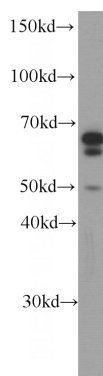
Specificity

Human; other species not tested.

Antibody description

Melanophilin Mouse Monoclonal antibody. Positive IF detected in HepG2 cells. Positive IHC detected in human skin cancer tissue, human kidney tissue. Positive WB detected in PC-3 cells, HEK-293 cells. Observed molecular weight by Western-blot: 66kD,63kD

Validations



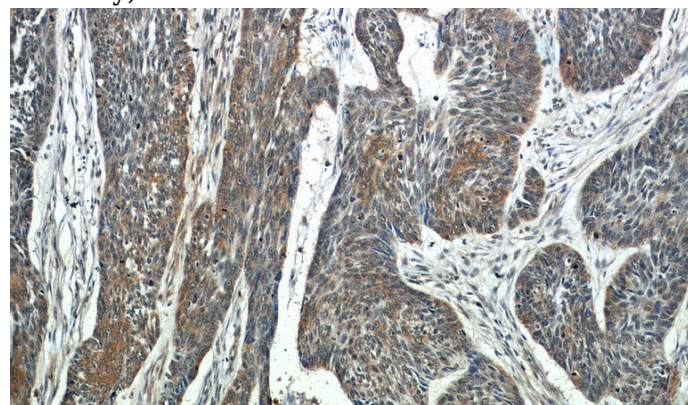
Preparation

This antibody was obtained by immunization of Melanophilin recombinant protein (Accession Number: NM_024101). Purification method: Protein G purified.

PC-3 cells were subjected to SDS PAGE followed by western blot with Catalog No:107422(MLPH antibody) at dilution of 1:1000

Formulation

PBS with 0.02% sodium azide and 50% glycerol pH 7.3.



Storage

Store at -20°C. DO NOT ALIQUOT

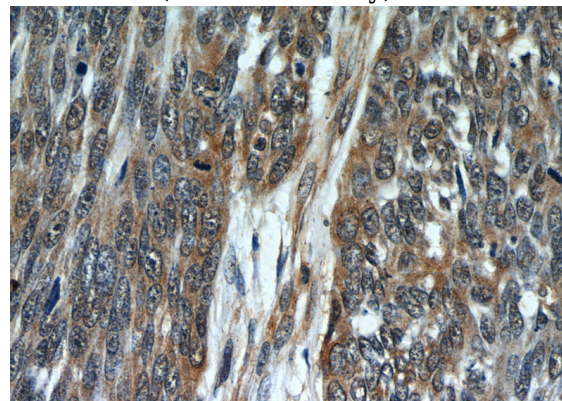
Clonality

Monoclonal

Immunohistochemistry of paraffin-embedded human skin cancer slide using Catalog No:107422(MLPH Antibody) at dilution of 1:50

Ig Type

Mouse IgG1



Applications

ELISA, WB, IF, IHC

Dilutions

Recommended Dilution:

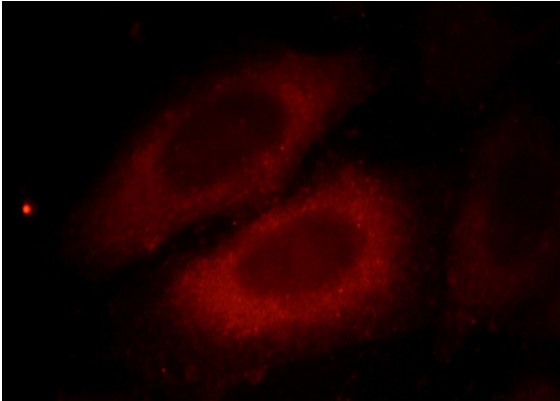
WB: 1:500-1:5000

Immunohistochemistry of paraffin-embedded human skin cancer slide using Catalog

Melanophilin antibody

Catalog Number: 107422

No:107422(MLPH Antibody) at dilution of 1:50



Immunofluorescent analysis of HepG2 cells, using MLPH antibody Catalog No: at 1:25 dilution and Rhodamine-labeled goat anti-mouse IgG (red).