

# LC3A/B antibody



Catalog Number: 107373

## Product name

LC3A/B antibody

## Specificity

Human, Pig; other species not tested.

## Antibody description

LC3A/B Mouse Monoclonal antibody. Positive IHC detected in human skeletal muscle tissue, human liver tissue. Positive FC detected in HeLa cells. Positive WB detected in human brain tissue, HeLa/HepG2 cells, pig brain tissue. Observed molecular weight by Western-blot: 14 kDa, 16 kDa

## Preparation

This antibody was obtained by immunization of recombinant protein (Accession Number: NM\_032514). Purification method: Protein G purified.

## Formulation

PBS with 0.02% sodium azide and 50% glycerol pH 7.3.

## Storage

Store at -20°C. DO NOT ALIQUOT

## Clonality

Monoclonal

## Ig Type

Mouse IgG1

## Applications

ELISA, IHC, WB, FC

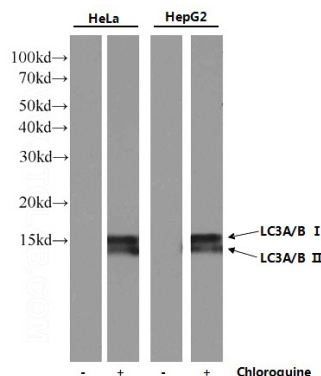
## Dilutions

Recommended Dilution:

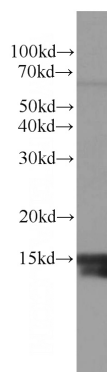
WB: 1:500-1:5000

IHC: 1:20-1:200

## Validations



Western Blot analysis of MAP1LC3A/B in HeLa and HepG2 cells untreated/treated with 50μM chloroquine overnight using Catalog No:107373 (MAP1LC3A/B monoclonal antibody) at dilution of



1:1000.

human brain tissue were subjected to SDS PAGE followed by western blot with Catalog No:107373(LC3A/B antibody) at dilution of 1:1000

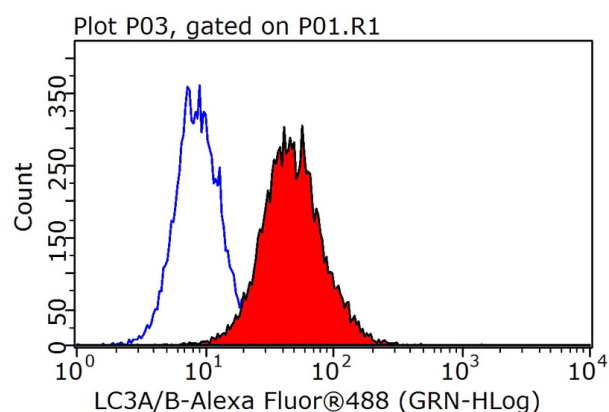
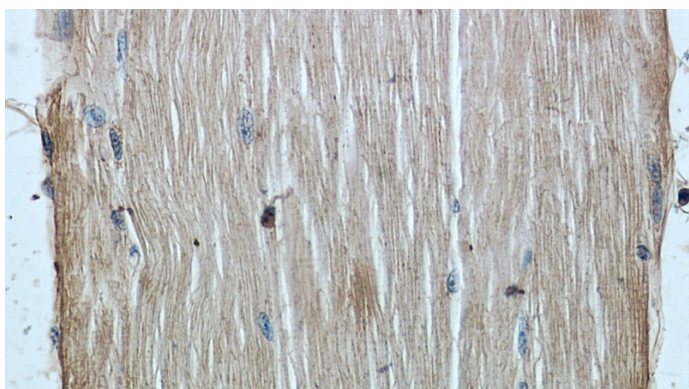


Immunohistochemistry of paraffin-embedded human skeletal muscle slide using Catalog No:107373(LC3A/B Antibody) at dilution of 1:50

# LC3A/B antibody



Catalog Number: 107373



Immunohistochemistry of paraffin-embedded human skeletal muscle slide using Catalog No:107373(LC3A/B Antibody) at dilution of 1:50

$1 \times 10^6$  HeLa cells were stained with 0.2  $\mu$ g LC3A/B antibody (Catalog No:107373, red) and control antibody (blue). Fixed with 90% MeOH blocked with 3% BSA (30 min). Alexa Fluor 488-conjugated AffiniPure Goat Anti-Mouse IgG(H+L) with dilution 1:1000.