

Lamin B1 antibody

Catalog Number: 107369

Product name

Lamin B1 antibody

IP: 1:5000-1:50000

IF: 1:20-1:200

Specificity

Human, Mouse, Rat; other species not tested.

Antibody description

Lamin B1 Mouse Monoclonal antibody. Positive IP detected in HeLa cells. Positive WB detected in HeLa cells. Positive FC detected in HeLa cells. Positive IF detected in HepG2 cells. Observed molecular weight by Western-blot: 66 kDa

Preparation

This antibody was obtained by immunization of Lamin B1 recombinant protein (Accession Number: NM_005573). Purification method: Protein G purified.

Formulation

PBS with 0.02% sodium azide and 50% glycerol pH 7.3.

Storage

Store at -20°C. DO NOT ALIQUOT

Clonality

Monoclonal

Ig Type

Mouse IgG1

Applications

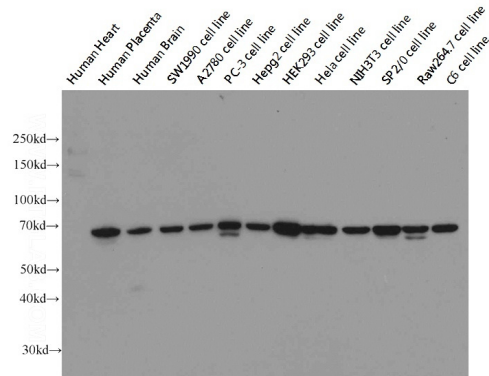
ELISA, WB, IF, FC, IP

Dilutions

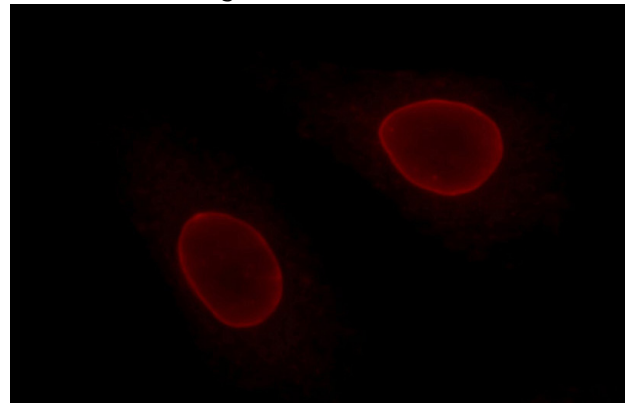
Recommended Dilution:

WB: 1:5000-1:50000

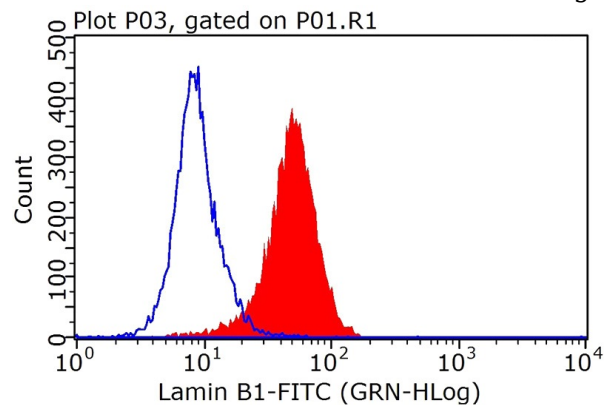
Validations



Western blot on multiple cells/tissues with anti-LMNB1 (Catalog No:117328) at dilution 1:20000.



Immunofluorescent analysis of HepG2 cells using Catalog No:117328(Lamin B1 Antibody) at dilution of 1:50 and Rhodamine-Goat anti-Mouse IgG

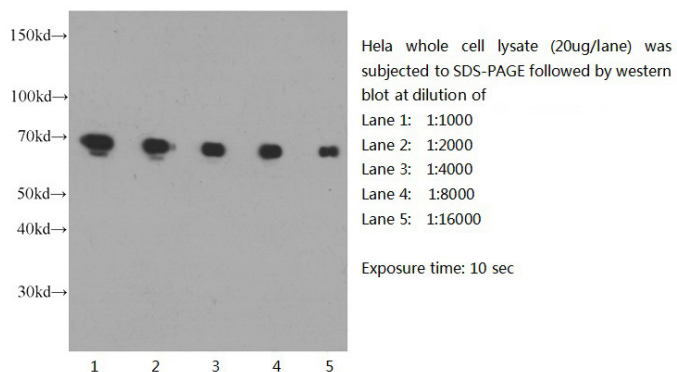


1X10⁶ HeLa cells were stained with 0.2ug Lamin B1 antibody (Catalog No:117328, red) and control antibody (blue). Fixed with 90% MeOH blocked

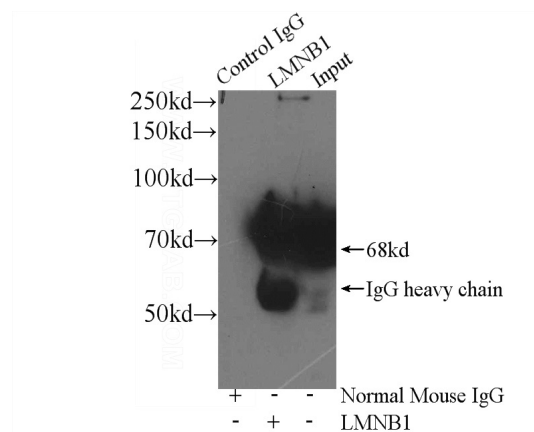
Lamin B1 antibody

Catalog Number: 107369

with 3% BSA (30 min). FITC-Goat anti-Mouse IgG with dilution 1:100.



Western blot of HeLa cell with anti-LMN B1 (Catalog No:117328) at various dilutions.



IP Result of anti-Lamin B1 (IP:Catalog No:117328, 4ug; Detection:Catalog No:117328 1:20000) with HeLa cells lysate 3560ug.