

KLF15 antibody



Catalog Number: 107364

Product name

KLF15 antibody

Specificity

Human; other species not tested.

Antibody description

KLF15 Mouse Monoclonal antibody. Positive WB detected in human skeletal muscle tissue. Observed molecular weight by Western-blot: 45 kDa

Preparation

This antibody was obtained by immunization of KLF15 recombinant protein (Accession Number: NM_014079). Purification method: Thiophilic affinity chromatograph.

Formulation

PBS with 0.02% sodium azide and 50% glycerol pH 7.3.

Storage

Store at -20°C. DO NOT ALIQUOT

Clonality

Monoclonal

Ig Type

Mouse IgM

Applications

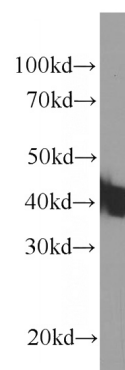
ELISA, WB

Dilutions

Recommended Dilution:

WB: 1:1000-1:10000

Validations



human skeletal muscle tissue were subjected to SDS PAGE followed by western blot with Catalog No:107364(KLF15 Antibody) at dilution of 1:2000