

OGDH antibody

Catalog Number: 107345

Product name

OGDH antibody

IHC: 1:50-1:500

IF: 1:50-1:500

Specificity

Human; other species not tested.

Antibody description

OGDH Mouse Monoclonal antibody. Positive IF detected in HepG2 cells. Positive IHC detected in human lung cancer tissue. Positive WB detected in human heart tissue, ROS1728 cells. Observed molecular weight by Western-blot: 116 kDa

Preparation

This antibody was obtained by immunization of OGDH recombinant protein (Accession Number: NM_002541). Purification method: Protein A purified.

Formulation

PBS with 0.02% sodium azide and 50% glycerol pH 7.3.

Storage

Store at -20°C. DO NOT ALIQUOT

Clonality

Monoclonal

Ig Type

Mouse IgG2b

Applications

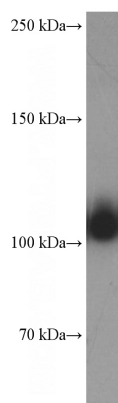
ELISA, WB, IHC, IF

Dilutions

Recommended Dilution:

WB: 1:1000-1:10000

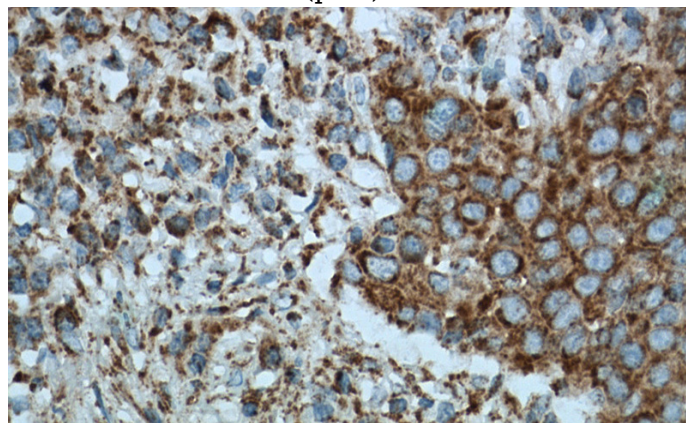
Validations



human heart tissue were subjected to SDS PAGE followed by western blot with Catalog No:107345(OGDH Antibody) at dilution of 1:2500



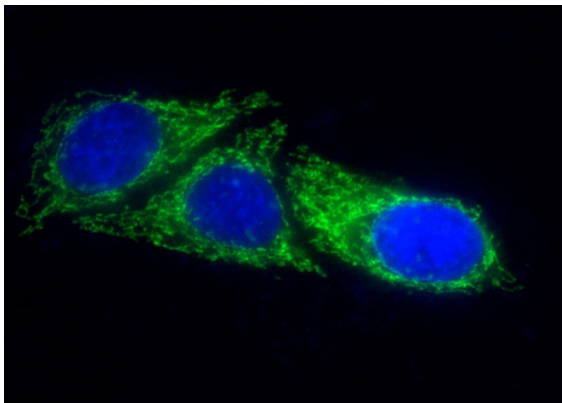
Immunohistochemistry of paraffin-embedded human lung cancer tissue slide using Catalog No:107345(OGDH Antibody) at dilution of 1:200 (under 10x lens). heat mediated antigen retrieved with Tris-EDTA buffer(pH9).



Immunohistochemistry of paraffin-embedded human lung cancer tissue slide using Catalog No:107345(OGDH Antibody) at dilution of 1:200 (under 40x lens). heat mediated antigen retrieved with Tris-EDTA buffer(pH9).

OGDH antibody

Catalog Number: 107345



Immunofluorescent analysis of (10% Formaldehyde) fixed HepG2 cells using Catalog No:107345(OGDH Antibody) at dilution of 1:100 and Alexa Fluor 488-conjugated AffiniPure Goat Anti-Mouse IgG(H+L)