

NSE antibody



Catalog Number: 107339

Product name

NSE antibody

IHC: 1:20-1:200

IF: 1:20-1:200

Specificity

Human, Mouse, Rat; other species not tested.

Antibody description

NSE Mouse Monoclonal antibody. Positive IF detected in SH-SY5Y cells. Positive IHC detected in human brain tissue. Positive WB detected in SH-SY5Y cells, C6 cells, U-251 cells. Observed molecular weight by Western-blot: 47 kDa

Preparation

This antibody was obtained by immunization of NSE recombinant protein (Accession Number: NM_001975). Purification method: Protein G purified.

Formulation

PBS with 0.02% sodium azide and 50% glycerol pH 7.3.

Storage

Store at -20°C. DO NOT ALIQUOT

Clonality

Monoclonal

Ig Type

Mouse IgG1

Applications

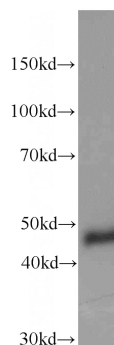
ELISA, WB, IHC, IF

Dilutions

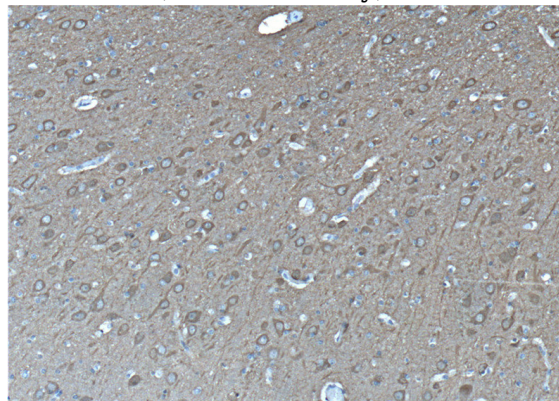
Recommended Dilution:

WB: 1:500-1:5000

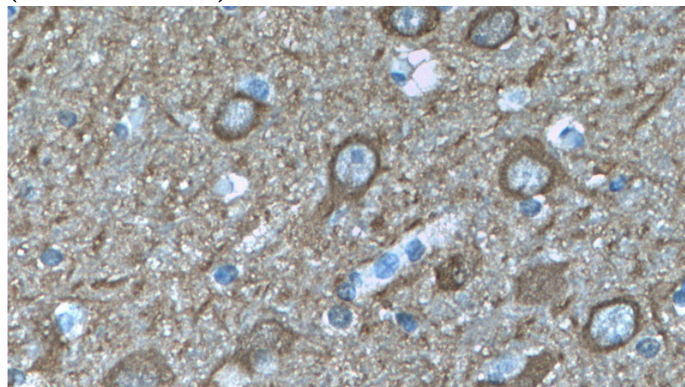
Validations



SH-SY5Y cells were subjected to SDS PAGE followed by western blot with Catalog No:107339(ENO2 Antibody) at dilution of 1:1000

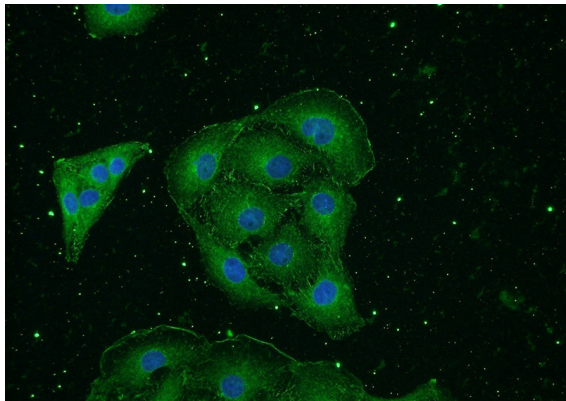


Immunohistochemistry of paraffin-embedded human brain tissue slide using Catalog No:107339(ENO2 Antibody) at dilution of 1:200 (under 10x lens)



Immunohistochemistry of paraffin-embedded

human brain tissue slide using Catalog No:107339(ENO2 Antibody) at dilution of 1:200 (under 40x lens)



Immunofluorescent analysis of SH-SY5Y cells using Catalog No:107339(ENO2 Antibody) at dilution of 1:50 and Alexa Fluor 488-conjugated AffiniPure Goat Anti-Mouse IgG(H+L)