

# Neuropilin 1 antibody



Catalog Number: 107330

## Product name

Neuropilin 1 antibody

IHC: 1:20-1:200

IF: 1:10-1:100

## Specificity

Human; other species not tested.

## Antibody description

Neuropilin 1 Mouse Monoclonal antibody. Positive WB detected in Human Blood. Positive IHC detected in human placenta tissue, human gliomas tissue. Positive IF detected in human embryonic stem cells. Observed molecular weight by Western-blot: 103 kDa

## Preparation

This antibody was obtained by immunization of Neuropilin 1 recombinant protein (Accession Number: NM\_001024629). Purification method: Caprylic acid/ammonium sulfate precipitation.

## Formulation

PBS with 0.1% sodium azide and 50% glycerol pH 7.3.

## Storage

Store at -20°C. DO NOT ALIQUOT

## Clonality

Monoclonal

## Ig Type

Mouse IgG

## Applications

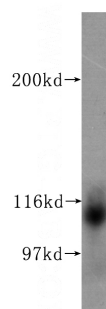
ELISA, WB, IHC, IF

## Dilutions

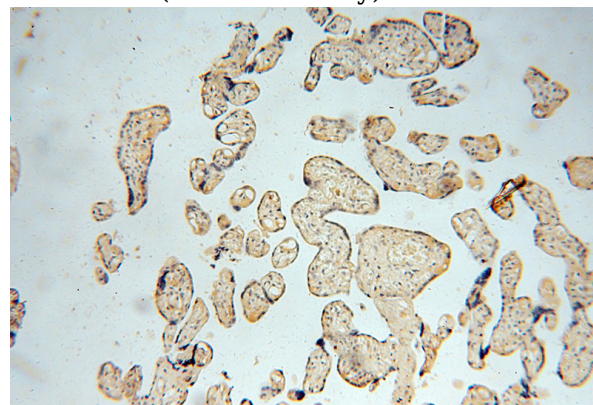
Recommended Dilution:

WB: 1:500-1:5000

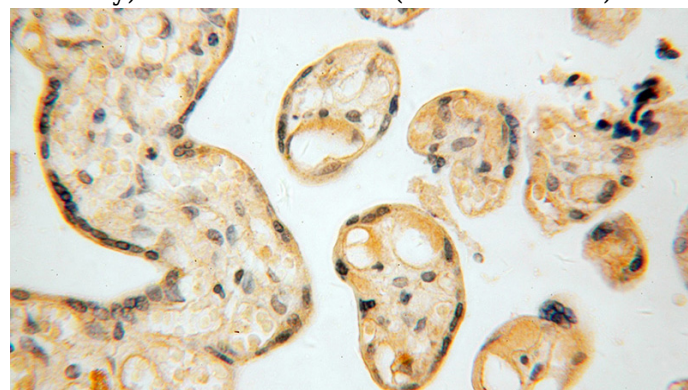
## Validations



human blood tissue were subjected to SDS PAGE followed by western blot with Catalog No:107330(NRP1 antibody) at dilution of 1:500



Immunohistochemical of paraffin-embedded human placenta using Catalog No:107330(NRP1 antibody) at dilution of 1:50 (under 10x lens)



Immunohistochemical of paraffin-embedded human placenta using Catalog No:107330(NRP1

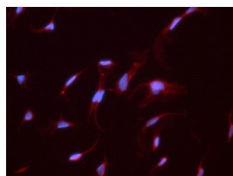
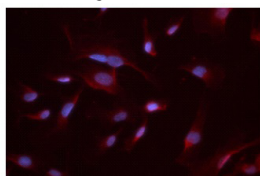
# Neuropilin 1 antibody



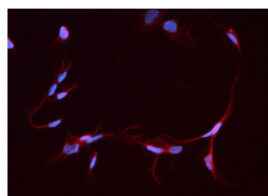
Catalog Number: 107330

---

antibody) at dilution of 1:50 (under 40x lens)



Confocal immunofluorescent analysis of human embryonic stem cells with Catalog No:107330 at dilution of 1:100. DAPI was used to stain the cell nuclei (blue) at a concentration of 1ug/ml. This photo is the merge of PE and DAPI. (40X)



Confocal immunofluorescent analysis of human embryonic stem cells at dilution of 1:100. DAPI was used to stain the cell nuclei (blue) at a concentration of 1ug/ml. This photo is the merge of PE and DAPI. (40X)